

## SPECIFICATIONS

Shell	Shell Material	Hoop	Lug	Mount System	Clamp System	Tom Mount	Bass Drum
Air-Seal System	All Birch 6ply	Triple Frange Hoop	Weighted High Tension Lug	YESS	All Round Ball Clamp	Triple Tom Holder	Bass Drum Leg

Head	BD(24"-20")		BD(18")		TT/FT	
Batter/Top	Yamaha Remo PS3 Coated		Yamaha Remo US Coated Ambassador		Yamaha Remo US Coated Ambassador	
Front/Bottom	Yamaha Remo PS3 Smooth White		Yamaha Remo PS3 Smooth White		Yamaha Remo US Clear Ambassador	

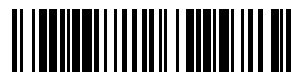
## SIZE VARIATIONS

Diameter	Bass Drum						Floor Tom		
	24"	22"		20"	18"		18"	16"	14"
x Depth	14"	18"	16"	14"	16"	14"	16"	15"	13"
Model No.	RBB2414	RBB2218	RBB2216	RBB2214	RBB2016	RBB1814	RBF1816	RBF1615	RBF1413
No. of Tuning Bolts	10	10	10	10	10	8	8	8	8

Diameter	Tom Tom								
	16"	14"	13"		12"		10"		8"
x Depth	14"	12"	11"	9"	10"	8"	9"	7.5"	7.5"
Model No.	RBT1614	RBT1412	RBT1311	RBT1309	RBT1210	RBT1208	RBT1009	RBT1007	RBT0807
No. of Tuning Bolts	8	8	6	6	6	6	6	6	5

## TOM PACKAGE

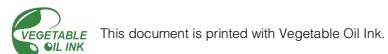
	Floor Tom	Tom Tom		Tom Holder
RBP6F3	RBF1615	RBT1208	RBT1007	TH945B
RBP4F3	RBF1413	RBT1208	RBT1007	TH945B



P10027647

YAMAHA CORPORATION  
P.O.BOX1, Hamamatsu Japan

LDR1603MW Printed in Japan



# Recording Custom



# The Recording Custom Story Continues

Widely regarded as the most recorded drums in history, the iconic Recording Custom was instrumental in shaping the Modern Drum set as we know it today. A choice for many world leading drummers due to its focused rich, warm and pronounced tone that was easy to use and tune. The first All-Birch shell design constructed with Diagonal Seams using Yamaha's pioneering Air Seal System. Recording Custom was also the first Drum kit to feature High Gloss Lacquer finishes. Working with the legendary Artist Steve Gadd, Yamaha have now elevated the series producing a refined focused sound with enhanced rounded and deeper tone. The result is an easy-to-use and easy-to-tune drum kit that re-defines the classic signature sound. Suitable for any style of drumming in all situations.



## HISTORY

1967

1974

1975

1977

1978

1985

1987

1993

1995

2007

2010

2012

2016

1967 Yamaha drums production started at Yamaha Miyatake Factory (Hamamatsu, Japan), introducing the pioneering Air Seal System with Diagonal Seams to produce 100% round shells.

1974 Moved production to OEM manufacture. Yamaha invested in Air seal production methods in the factory and taught how to build Yamaha drums. Drums produced include YD7000,5000,3000 (All PVC wrapped).

1975 YD9000 Launched Yamaha designed top end series of YD with first 100% Birch shell with 60 degree bearing Edge. Color options included Wrapped colors & Real wood (Lacquer) All Birch BD8ply, FT/TT6ply, Hi-Tension Lug(with spring), Precision-formed Hoop and new 3-Way Tom Holder.

1977 YD9000D Launched, produced by Yamaha in Taiwan for export business to USA.

The design featured the "YD-shape" separate lug even with YD9000 name. This lug was spring less.



1978 YD9000R Launched Improved YD9000 Design with pioneering High Gloss Lacquer finishes thanks to our specialist know how from our famous Piano craftsman. All Birch Shell BD7ply, FT/TT6ply with 45 degree bearing edge. Hi-Tension Lug (with spring). Various size of hanging toms introduced including Suspended Floor Toms.

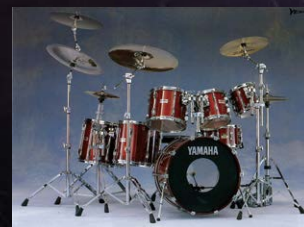
Steve Gadd helped the design. He wanted to a wider pallet of tones between rack toms and floor toms. Yamaha brought lots of concert tom to his home then adjusted tom depth and made changing sound fluency from 8" to 16" hanging toms.

Because they're so well suited to recording, many artists refer to these drums as Yamaha's "recording" kit instead of calling them the YD9000R.

1985 Name Change Yamaha Officially change the name to "RECORDING CUSTOM".

1987 Recording Custom Made in England

In 1987 Yamaha purchased Premier Drums and built two air seal lines in their factory. We also provided instruction on how to make Yamaha drums. We worked with Premier Drums to launch the "Power V," and then expanded production of the Tour Custom and Recording Custom.



1993 Recording Custom introduced YESS (Yamaha Enhanced Sustain System) mount. This mount uses knowledge of resonant nodal points and mounts the hardware were it will minimise interference with the shells natural tone.

Made some special edition 1995, Recording Custom 20th edition 2007, Yamaha 40th Anniversary model Gold, Silver and Washi" Japanese ancient paper" finish 2010, Akira Jimbo Yamaha 30th Anniversary model 2012, Yamaha 45th Anniversary YD9000 re-issue



2016 New Recording Custom Designed with Steve Gadd, The new features include 6 Ply 100% North American Birch shells with 30 degree bearing Edges and weighted Hi tension lugs which support a focused deeper tone. Produced in Yamaha's State-Of-The-Art Xioshan factory in Hangzhou, China.





# REFINING THE LEGENDARY RC WITH STEVE GADD

We have been careful to retain the greatest features of the previous Recording Custom kit while incorporating the best new innovations to produce a sound that is optimized for contemporary music. The end result is a drum kit that allows drummers to utilize their expressive power to maximum effect. We made no compromises during development, seeking out the advice of master drummer Steve Gadd, who uses his beloved Recording Custom recording sessions, for help in sound evaluation.



## NEW METAL SD LINEUP WITH RECORDING CUSTOM BRAND ON THEM

The new addition of the metal snare lineup to the Recording Custom series represents the addition of Yamaha's finest snare drums, using Steve's valuable input to its maximum. It adds a superb consistency, allowing drummers to fully utilize the sound functionality of the kit.



Aluminum



Brass



Stainless





Steve Gadd

Through all of our continued research and discussion, it was the support of Steve Gadd that encouraged us to move forward. When we told Steve that we were trying to revive the Yamaha Recording Custom, he showed a great deal of interest, expressing his feelings about the model and making several recommendations. Steve wanted a bass drum sound that was more powerful yet still mellow. He also asked for us to add a lifter to the 20-inch bass drum. The idea behind this was to get enough sound out of the midsized bass drum, while still maintaining good playing response, by positioning the beater to strike the center of the drum when using the lifter. This direction matched what Yamaha had in mind in terms of sound functionality, in the recording and performance environment.

All of these elements came together to solidify our decision to work once more on the Recording Custom drum kit.

Our goal was to make the Recording Custom an evolution in drum kits that would be up to the task in the modern recording and performance environment, while still retaining the previous identity of the Recording Custom. We wanted to create a Recording Custom that would be an answer to Steve Gadd's requests.

The identity we aimed for was, of course, a 100% birch shell kit with one-piece lugs. We examined several kinds of shells with different thicknesses. Using greater thickness means higher sound pressure; but the mass doesn't allow the drum to ring out, so the drum would not offer quite the powerful impression we were hoping for. On the other hand, using a thinner shell clearly offers greater volume and power in the mid-to-low-range, but causes the sound to lose some clarity. Given this, we decided to make some modifications to the one-piece lug. We were already planning to come out with a newly designed and more polished lineup, but we also decided to add a little more weight. By doing this, we could add the rigidity of the lugs to the thin shell for more volume and power, giving birth to a well-formed, core sound that we can truly say follows the tradition of the Recording Custom.

The lifter on the 20-inch bass drum made a huge difference. By allowing the beater to strike the center of the drum, we were able to achieve both the volume and the concentrated, tight sound we were looking for. Our 20-inch bass drum now booms with even more presence than other drums of its size in recording studios and performance venues where space is at a premium.

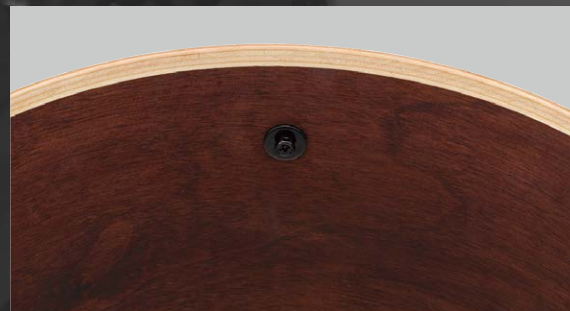
Steve Gadd explained 'For the past 3 years I've been meeting with the Research and Development guys at Yamaha with the aim of bringing the Recording Custom Series up to date. I told Yamaha what I thought throughout the process; the result is that everything is a step up. They still feel like the Recording Custom, when you take them out of the box they don't feel new, they feel comfortable and I think that's good. The Bass Drum has a nice fat sound, the drum responds to different heads on it, and my goal was to have a simple Snare Drum design that could respond to a wide range of tuning. I think we did a great job, the new Recording Customs sound great and I think you'll like them.'

# FEATURES



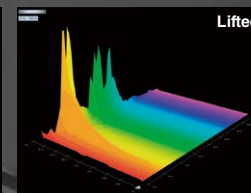
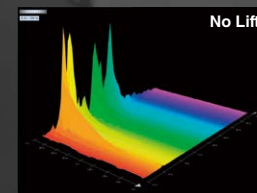
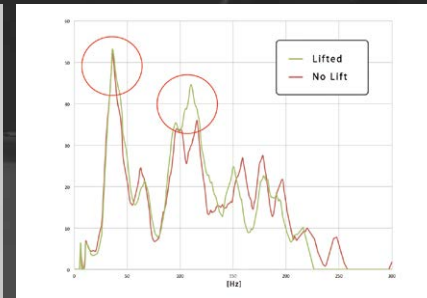
## NEW WEIGHTED HIGH TENSION LUGS

The revamped modern design retains the traditional essence of the Recording Custom. In order to maximum the attenuating properties of the birch wood, we've increased the weight of the lug, further enhancing the artist's expressive power and reducing undesirable noise from the shell without using a mute. This ensures optimum sustain for the core sound, producing a crisp, articulate tone.



## ALL BIRCH SHELL

In addition to their punchy power, birch shells are known to reduce unwanted noise and prevent interference when drums are set up side-by-side. The unique sonic characteristics of birch wood ensure that each stroke is clearly delineated, making it widely considered to be the ideal choice for recording environments.



## LIFTED STYLE BASS DRUM

Steve prefers a 20 inch lifted bass drum, so we adopted this specification. We reduced interference from the floor to maximize the resonance of the shell, and increased the length of the pedal beater rod, centering it precisely to ensure absolute accuracy during performances. This lifted bass drum produces a more punchy sound and accentuates the sound produced in the core of the shell.



R 1.5/30 DEGREE BEARING EDGE



COATED HEAD



YESS MOUNT



FLOOR TOM BRACKETS



DIECAST BD HOOKS





**COLOR VARIATIONS RECORDING CUSTOM IS AVAILABLE IN 4 LACQUERED FINISHES.**



Solid Black



Classic Walnut



Real Wood



Surf Green



**SOLID BLACK**

- Shell RBB2016, RBF1413, RBP6F3 (RBF1615, RBT1007, RBT1208, TH945B)
- Snare RAS1455
- Hardware CS865x3, HS1200T, SS950, DFP9500C

**CLASSIC WALNUT**

- Shell RBB2414, RBF1615, RBF1816, RBT1309
- Snare RRS1465
- Hardware CS865x4, HS1200T, SS950, FP9500C



**SURF GREEN**

- Shell RBB2218, RBP6F3 (RBF1615, RBT1007, RBT1208, TH945B)
- Snare RLS1455
- Hardware CS865x3, HS1200T, SS950, FP9500C



**REAL WOOD**

- Shell RBB1814, RBF1413, RBT1208
- Snare RRS1455
- Hardware CS755x3, HS740A, SS950, FP9500C





# SNARE DRUMS

## ALUMINUM / BRASS / STAINLESS



Aluminum



Brass



Stainless

	Snare						
	Aluminum		Brass		Stainless		
Diameter	14"		14"		13"	14"	
x Depth	6.5"	5.5"	6.5"	5.5"	6.5"	7"	5.5"
Model No.	RAS1465	RAS1455	RRS1465	RRS1455	RRS1365	RLS1470	RLS1455
No. of Tuning Bolts	10	10	10	10	10	10	10
Hoop	Aluminum Die-cast Hoop	Aluminum Die-cast Hoop	Dyna Hoop	Dyna Hoop	Dyna Hoop	Dyna Hoop	Dyna Hoop

### SNARE WIRE

20 strand snare wire equipped, and Steve Gadd signature 10 strand snare wire bundled (14"x5.5"). The drum includes the snare wire that Steve prefers to use. This is a 14 strand snare wire with the middle four strands removed. This special snare wire enhances the cutoff of the sound, enabling the artist to produce a crisper staccato tone.



### CENTER BEAD

After repeated evaluations of our design by Steve Gadd, we have created a groundbreaking snare drum. To date, Yamaha's snare drums have traditionally had the metal center bead on the interior of the drum. However, we have taken the step of fixing the center bead to the outside of the drum to produce a more open sound than our conventional drums, for crisp, articulate performance.



### Q-TYPE STRAINER

The heavy-duty Q-type strainer is robust whilst offering solid, stable and smooth operation, along with adjustment and snare replacement.

