



MOTIF-RACK XS Editor Installation Guide

ATTENTION

SOFTWARE LICENSING AGREEMENT

PLEASE READ THIS SOFTWARE LICENSE AGREEMENT ("AGREEMENT") CAREFULLY BEFORE USING THIS SOFTWARE. YOU ARE ONLY PERMITTED TO USE THIS SOFTWARE PURSUANT TO THE TERMS AND CONDITIONS OF THIS AGREEMENT. THIS AGREEMENT IS BETWEEN YOU (AS AN INDIVIDUAL OR LEGAL ENTITY) AND YAMAHA CORPORATION ("YAMAHA").

BY DOWNLOADING, INSTALLING, COPYING, OR OTHERWISE USING THIS SOFTWARE YOU ARE AGREEING TO BE BOUND BY THE TERMS OF THIS LICENSE. IF YOU DO NOT AGREE WITH THE TERMS, DO NOT DOWNLOAD, INSTALL, COPY, OR OTHERWISE USE THIS SOFTWARE. IF YOU HAVE DOWNLOADED OR INSTALLED THE SOFTWARE AND DO NOT AGREE TO THE TERMS, PROMPTLY DELETE THE SOFTWARE.

1. GRANT OF LICENSE AND COPYRIGHT

Yamaha hereby grants you the right to use one copy of the software program(s) and data ("SOFTWARE") accompanying this Agreement. The term SOFTWARE shall encompass any updates to the accompanying software and data. The SOFTWARE is owned by Yamaha and/or Yamaha's licensor(s), and is protected by relevant copyright laws and all applicable treaty provisions. While you are entitled to claim ownership of the data created with the use of SOFTWARE, the SOFTWARE will continue to be protected under relevant copyrights.

- **You may** use the SOFTWARE on a **single computer**.
- **You may** make one copy of the SOFTWARE in machine-readable form for backup purposes only, if the SOFTWARE is on media where such backup copy is permitted. On the backup copy, you must reproduce Yamaha's copyright notice and any other proprietary legends that were on the original copy of the SOFTWARE.
- **You may** permanently transfer to a third party all your rights in the SOFTWARE, provided that you do not retain any copies and the recipient reads and agrees to the terms of this Agreement.

2. RESTRICTIONS

- **You may not** engage in reverse engineering, disassembly, decompilation or otherwise deriving a source code form of the SOFTWARE by any method whatsoever.
- **You may not** reproduce, modify, change, rent, lease, or distribute the SOFTWARE in whole or in part, or create derivative works of the SOFTWARE.
- **You may not** electronically transmit the SOFTWARE from one computer to another or share the SOFTWARE in a network with other computers.
- **You may not** use the SOFTWARE to distribute illegal data or data that violates public policy.
- **You may not** initiate services based on the use of the SOFTWARE without permission by Yamaha Corporation.

Copyrighted data, including but not limited to MIDI data for songs, obtained by means of the SOFTWARE, are subject to the following restrictions which you must observe.

- Data received by means of the SOFTWARE may not be used for any commercial purposes without permission of the copyright owner.
- Data received by means of the SOFTWARE may not be duplicated, transferred, or distributed, or played back or performed for listeners in public without permission of the copyright owner.
- The encryption of data received by means of the SOFTWARE may not be removed nor may the electronic watermark be modified without permission of the copyright owner.

3. TERMINATION

This Agreement becomes effective on the day that you receive the SOFTWARE and remains effective until terminated. If any copyright law or provisions of this Agreement is violated, the Agreement shall terminate automatically and immediately without notice from Yamaha. Upon such termination, you must immediately destroy the licensed SOFTWARE, any accompanying written documents and all copies thereof.

4. DISCLAIMER OF WARRANTY ON SOFTWARE

You expressly acknowledge and agree that use of the SOFTWARE is at your sole risk. The SOFTWARE and related documentation are provided "AS IS" and without warranty of any kind. NOTWITHSTANDING ANY OTHER PROVISION OF THIS AGREEMENT, YAMAHA EXPRESSLY DISCLAIMS ALL WARRANTIES AS TO THE SOFTWARE, EXPRESS, AND IMPLIED, INCLUDING BUT NOT LIMITED TO THE IMPLIED WARRANTIES OF MERCHANTABILITY, FITNESS FOR A PARTICULAR PURPOSE AND NON-INFRINGEMENT OF THIRD PARTY RIGHTS. SPECIFICALLY, BUT WITHOUT LIMITING THE FOREGOING, YAMAHA DOES NOT WARRANT THAT THE SOFTWARE WILL MEET YOUR REQUIREMENTS, THAT THE OPERATION OF THE SOFTWARE WILL BE UNINTERRUPTED OR ERROR-FREE, OR THAT DEFECTS IN THE SOFTWARE WILL BE CORRECTED.

5. LIMITATION OF LIABILITY

YAMAHA'S ENTIRE OBLIGATION HEREUNDER SHALL BE TO PERMIT USE OF THE SOFTWARE UNDER THE TERMS HEREOF. IN NO EVENT SHALL YAMAHA BE LIABLE TO YOU OR ANY OTHER PERSON FOR ANY DAMAGES, INCLUDING, WITHOUT LIMITATION, ANY DIRECT, INDIRECT, INCIDENTAL OR CONSEQUENTIAL DAMAGES, EXPENSES, LOST PROFITS, LOST DATA OR OTHER DAMAGES ARISING OUT OF THE USE, MISUSE OR INABILITY TO USE THE SOFTWARE, EVEN IF YAMAHA OR AN AUTHORIZED DEALER HAS BEEN ADVISED OF THE POSSIBILITY OF SUCH DAMAGES. In no event shall Yamaha's total liability to you for all damages, losses and causes of action (whether in contract, tort or otherwise) exceed the amount paid for the SOFTWARE.

6. THIRD PARTY SOFTWARE

Third party software and data ("THIRD PARTY SOFTWARE") may be attached to the SOFTWARE. If, in the written materials or the electronic data accompanying the Software, Yamaha identifies any software and data as THIRD PARTY SOFTWARE, you acknowledge and agree that you must abide by the provisions of any Agreement provided with the THIRD PARTY SOFTWARE and that the party providing the THIRD PARTY SOFTWARE is responsible for any warranty or liability related to or arising from the THIRD PARTY SOFTWARE. Yamaha is not responsible in any way for the THIRD PARTY SOFTWARE or your use thereof.

- Yamaha provides no express warranties as to the THIRD PARTY SOFTWARE. IN ADDITION, YAMAHA EXPRESSLY DISCLAIMS ALL IMPLIED WARRANTIES, INCLUDING BUT NOT LIMITED TO THE IMPLIED WARRANTIES OF MERCHANTABILITY AND FITNESS FOR A PARTICULAR PURPOSE, as to the THIRD PARTY SOFTWARE.
- Yamaha shall not provide you with any service or maintenance as to the THIRD PARTY SOFTWARE.
- Yamaha is not liable to you or any other person for any damages, including, without limitation, any direct, indirect, incidental or consequential damages, expenses, lost profits, lost data or other damages arising out of the use, misuse or inability to use the THIRD PARTY SOFTWARE.

7. GENERAL

This Agreement shall be interpreted according to and governed by Japanese law without reference to principles of conflict of laws. Any dispute or procedure shall be heard before the Tokyo District Court in Japan. If for any reason a court of competent jurisdiction finds any portion of this Agreement to be unenforceable, the remainder of this Agreement shall continue in full force and effect.

8. COMPLETE AGREEMENT

This Agreement constitutes the entire agreement between the parties with respect to use of the SOFTWARE and any accompanying written materials and supersedes all prior or contemporaneous understandings or agreements, written or oral, regarding the subject matter of this Agreement. No amendment or revision of this Agreement will be binding unless in writing and signed by a fully authorized representative of Yamaha.

Special Notices

- The software and this Installation Guide are the exclusive copyrights of Yamaha Corporation.
- Please read carefully the Software Licensing Agreement at the front of this Installation Guide before installing the application.
- Copying of the software or reproduction of this Installation Guide in whole or in part by any means is expressly forbidden without the written consent of the manufacturer.
- Yamaha makes no representations or warranties with regard to the use of the software and documentation and cannot be held responsible for the results of the use of this Installation Guide and the software.
- Future upgrades of application and system software and any changes in specifications and functions will be announced at the following website: <http://www.yamahasynt.com/download/>
- The screen displays as illustrated in this Installation Guide are for instructional purposes, and may appear somewhat different from the screens which appear on your computer.
- Copying of the commercially available musical data including but not limited to MIDI data and/or audio data is strictly prohibited except for your personal use.
- Windows is the registered trademarks of Microsoft® Corporation.
- Apple and Macintosh are trademarks of Apple Inc., registered in the U.S. and other countries.
- Steinberg and Cubase are the registered trademarks of Steinberg Media Technologies GmbH.
- The company names and product names in this Installation Guide are the trademarks or registered trademarks of their respective companies.

Precautions when using the USB TO HOST connector

When connecting the computer to the USB TO HOST connector, make sure to observe the following points. Failing to do so risks freezing the computer and corrupting or even losing the data. If the computer or the instrument freezes, turn the power to the instrument off or restart the computer.

- ⚠ CAUTION**
- Before connecting the computer to the USB TO HOST connector, exit from any power-saving mode (such as suspended, sleep, standby) of the computer.
 - Before turning on the power to the instrument, connect the computer to the USB TO HOST connector.
 - Execute the following before turning the power to the instrument on/off or plugging/unplugging the USB cable to/from the USB TO HOST connector.
 - Quit any open applications.
 - Make sure that data is not being transmitted from the instrument. (Data is transmitted only by playing notes on the keyboard or playing back a song.)
 - While a USB device is connected to the instrument, you should wait for six seconds or more between these operations: (1) when turning the power of the instrument off then on again, or (2) when alternately connecting/disconnecting the USB cable.

MOTIF-RACK XS Editor

MOTIF-RACK XS Editor is a convenient tool which lets you edit and save the various parameters of your MOTIF-RACK XS tone generator. These include Voice and Mixing parameters (edited in the Voice or Multi mode of the MOTIF-RACK XS) such as Volume, Pan, EG, and Cutoff and other settings. Thanks to its easy-to-understand graphical interface, you can edit various parameters of the MOTIF-RACK XS right from your computer—using the mouse to adjust the virtual knobs, sliders, and buttons and entering values from the computer keyboard. Finally, all the changes you have made can be saved to your computer or transmitted to the MOTIF-RACK XS instrument. You can use the MOTIF-RACK XS Editor as a plug-in for the software listed below.

- **Studio Manager**
- **DAW application software compatible with Studio Connections**

Installing the Software

The actual installation steps and the use of the software itself differs depending on the operating system that you are using. Please refer to the appropriate installation instructions.

- 1** Verify that your system meets the operating requirements of each software program.page 4
- 2** Install the appropriate driver to your computer.page 5
- 3** Install the Studio Manager and the MOTIF-RACK XS Editor.....page 6
- 4** Start up the Studio Manager, then start up the MOTIF-RACK XS Editor.page 8

For subsequent operations, refer to the PDF manual accessed from the [HELP] menu in the respective software program.

Minimum System Requirements

The system requirements below may differ slightly depending on the particular operating system.

Windows

OS	Windows Vista/Windows XP Home Edition/XP Professional
Computer	Intel Pentium 1.4 GHz or higher
Available Memory	512 MB or more
Hard Disk	200 MB or more
Display	1024 x 768, high color (16 bit) or higher
Other	USB-MIDI Driver (for Windows Vista) version 3.0.2 or later USB-MIDI Driver (for Windows XP/2000) version 2.2.0 or later Studio Manager version 2.1.7 or later Cubase SX 3.1, Cubase 4 or Cubase AI 4

Macintosh

OS	Mac OS X 10.4 or later
Computer	Power PC G4 1GHz or higher CPU / Intel CPU
Available Memory	512 MB or more
Hard Disk	200 MB or more
Display	1024 x 768, high color (16 bit) or higher
Other	USB-MIDI Driver (for Mac OS X) version 1.1.0 or later Studio Manager version 2.2.0 or later Cubase 4 or Cubase AI 4

NOTE The Minimum System Requirements described above are applied to the MOTIF-RACK XS Editor version 1.1.0. Keep in mind that the software is often updated and the system requirements are subject to change. You can check the latest version information of each program and its system requirements at the following website
<http://www.yamahasyth.com/>

The system requirements may differ slightly depending on the particular computer.
When using the MOTIF-RACK XS Editor as a plug-in within a DAW program, refer to the minimum requirements for the DAW software you are using as well as the minimum requirements for the MOTIF-RACK XS Editor given above.

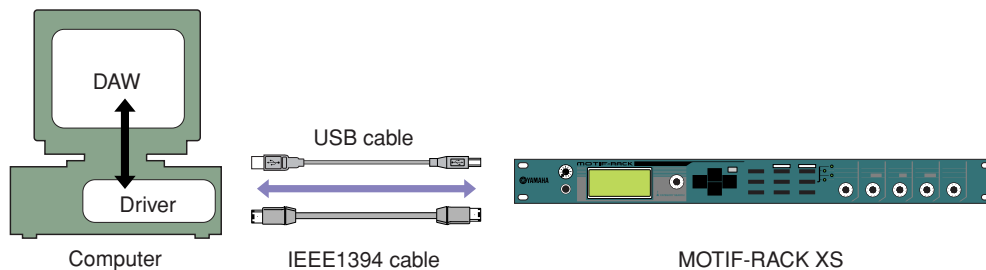
Software Installation

To use the MOTIF-RACK XS Editor, you'll need to install the following software programs. Follow the appropriate instructions below corresponding to the software you're using.

- **USB-MIDI driver or AI Driver**
- **Studio Manager**
- **MOTIF-RACK XS Editor**

USB-MIDI Driver or AI Driver Installation

To operate your Yamaha hardware from your computer via a USB cable or an IEEE1394 cable, you'll need to install the USB-MIDI driver software or the AI Driver software. The USB-MIDI driver is necessary when using a USB connection to transfer MIDI data back and forth between your computer's DAW software and the MOTIF-RACK XS. The AI Driver is necessary when using an IEEE1394 connection to transfer Audio/MIDI data back and forth between your computer's DAW software and the MOTIF-RACK XS with optional mLAN16E2 installed.



Make sure to check the following website for installation and up-to-date news on the USB-MIDI driver.

http://www.global.yamaha.com/download/usb_midi/

Make sure to check the following website for installation and up-to-date news on the AI Driver.

<http://www.global.yamaha.com/download/>

NOTE MOTIF-RACK XS Editor cannot be used over a MIDI connection.

Studio Manager Installation

Studio Manager is a cross-platform application that enables you to use multiple Editor programs for remotely controlling Yamaha hardware from your computer, and allows you to save the Editor settings for instant recall. For specific instructions on using the software, refer to the PDF manual from the [HELP] menu in the Studio Manager and each Editor.

You can download the latest version of Studio Manager at the following website. If you are using the MOTIF-RACK XS Editor on a Macintosh, download the Studio Manager Version 2.2.0 or later from the website below. For specific installation instructions, refer to the installation guide included in the downloaded file.

<http://www.yamahasyth.com/download/>

MOTIF-RACK XS Editor Installation

Follow the instructions below to install the MOTIF-RACK XS Editor programs.

[Windows]

- 1 After the downloaded compressed file is properly extracted, double-click the “setup.exe” file.
The MOTIF-RACK XS Editor setup dialog appears.
- 2 Follow the on-screen instructions to install the software.

[Macintosh]

- 1 After the downloaded compressed file is properly extracted, double-click the “install MOTIF-RACK XS Editor.mpkg” file.
The MOTIF-RACK XS Editor setup dialog appears.
- 2 Follow the on-screen instructions to install the software.

When the MOTIF-RACK XS Editor and the other necessary software is installed, you can start the MOTIF-RACK XS Editor. You'll need to start the MOTIF-RACK XS Editor from the window of Studio Manager. For details about Studio Manager or starting and setting up Studio Manager, refer to the “Getting Started” on [page 7](#).

Windows Software Uninstall (removing the installed application)

To remove the installed editors and Studio Manager from Windows:

Select [START] → [Control Panel] → [Add or Remove Programs] → “Change or Remove Programs”, then select the application to be removed and click [Change/Remove].

Follow the on-screen instructions to uninstall the application.

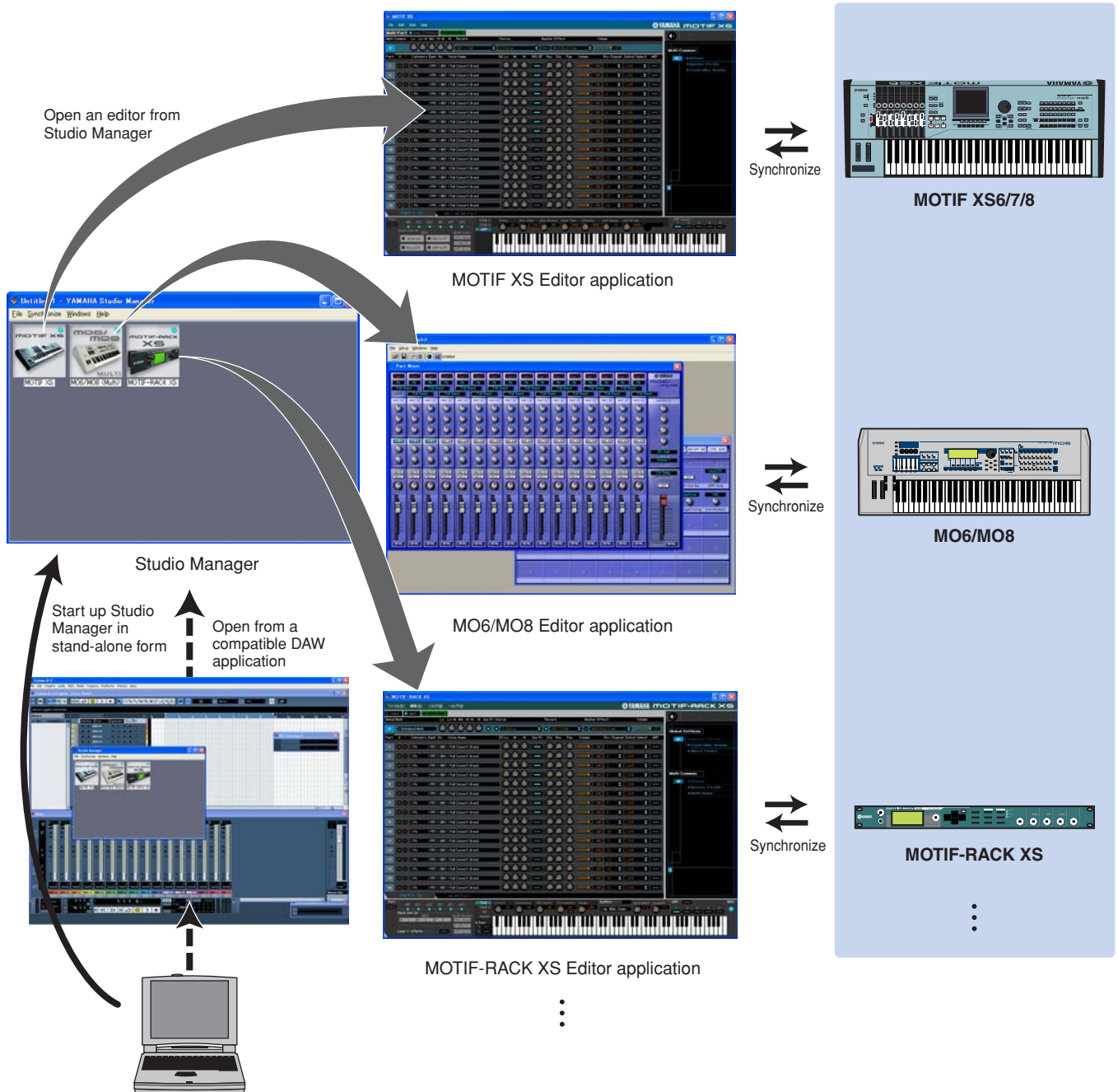
NOTE The button names or menus may differ depending on the computer OS.

Getting Started

Overview of Studio Manager and Recall

Studio Manager is a cross-platform application that enables you use multiple Editor programs for remotely controlling Yamaha hardware from your computer, and allows you to save the Editor settings for instant recall. You can run Studio Manager as a stand-alone application, or as a plug-in within DAW (digital audio workstation)/sequencer applications that are compatible with Studio Connections, such as Cubase SX 3 or later. In either case, the basic functionality is the same. For the latest information on compatible DAW applications, refer to the following website.

<http://www.studioconnections.org/>



The settings of each editor can be saved and recalled together from Studio Manager or the DAW application. In other words, you can change the settings of your entire system in a single operation by recalling the settings for multiple devices from Studio Manager or your DAW application. This capability is referred to as "Recall." When you want to save setting files, you can do this from Studio Manager to recall multiple devices at once, or from an individual Editor to recall only a specific device. When you save your settings in your DAW application, the Studio Manager settings will also be saved together with the DAW application file, and can also be recalled in the same way.

Starting and setting up Studio Manager

You'll need to perform the following setup in order to use the editors in Studio Manager.

1 Start up Studio Manager.

- **When starting from a DAW compatible with Studio Connections:**

For details, refer to your DAW owner's manual.

The following procedure applies to Cubase 4.

From Cubase 4's [Device] menu, choose [Yamaha Studio Manager] to open the Studio Manager window.

- **When starting as a stand-alone application:**

Windows: Click the [Start] button, place your mouse cursor over [Programs (All Programs)] → [YAMAHA Studio Manager], then click [Studio Manager].

Mac OS X: Open folders in the order of "Applications" → "YAMAHA" → "Studio Manager," and double-click "SM2."

2 If the MOTIF-RACK XS Editor icon isn't displayed on the workspace of the Studio Manager window, add the MOTIF-RACK XS Editor to the Studio Manager workspace.

Select [File] menu → [Setup] → "Modify Workspace", then select "MOTIF-RACK XS" in the "Device Editor" of the "Add Device" and click [Add →]. Make sure that "MOTIF-RACK XS" is listed in the "Workspace" column, then click [OK].

NOTE If the MOTIF-RACK XS Editor is installed with the box next to "Add the Editor to the Studio Manager Workspace" checkmarked, the MOTIF-RACK XS Editor icon is automatically added to the workspace of the Studio Manager window when Studio Manager is started.

3 Set the MIDI Ports.

When starting Studio Manager as a plug-in of the DAW application:

Set the MIDI Ports on the DAW application. For details, refer to the manual of the DAW application.

NOTE When using Cubase 4, the MIDI Ports are automatically set simply by starting Studio Manager from Cubase 4. However, when using Cubase via an IEEE1394 cable, you will need to install "Extensions for Steinberg DAW" to the computer in order for the MIDI Ports to be set automatically. The Extension Module can be downloaded from the following website address:

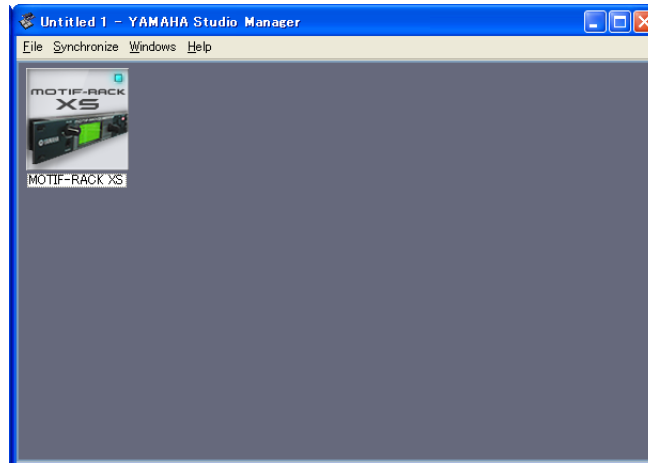
<http://www.yamahasyth.com/download/>

When starting Studio Manager as a stand-alone application:

Set the MIDI Ports by calling up the MIDI Ports window via [MIDI Ports]/[MIDI Settings]. When using a USB connection, enter checkmarks to the boxes of Ports 1 and 4 for the MOTIF-RACK XS for both the Input Ports and the Output Ports. When using an IEEE1394 connection, enter checkmarks to the boxes of mLAN Port 1 ("mLAN MIDI In"/"mLAN MIDI Out") for both the Input Ports and the Output Ports.

4 Start up the MOTIF-RACK XS Editor.

In the Studio Manager window, double-click the icon for the MOTIF-RACK XS Editor.



Studio Manager window

5 Set up the MOTIF-RACK XS Editor.

For details, refer to the PDF manual, found in the [Help] menu on the MOTIF-RACK XS Editor.

6 Synchronize the MOTIF-RACK XS Editor with your mixing console.

For details, refer to the PDF manual, found in the [Help] menu on each editor.

Audio Integration

Since the MOTIF-RACK XS Editor is compatible with Audio Integration, you can also start the Editor within the DAW as easily as you would with any plug-in software synthesizer.

For details about Audio Integration, visit our web site at:

<http://www.studioconnections.org/>

Troubleshooting

When starting the MOTIF-RACK XS Editor after the installation and controlling the MOTIF-RACK XS from your computer via a USB or IEEE1394 cable, the MOTIF-RACK XS does not operate correctly.

- Did you install the latest USB-MIDI Driver/AI Driver?..... [page 5](#)
- Is the USB or IEEE1394 cable used to connect the MOTIF-RACK XS to your computer connected correctly?
..... [MOTIF-RACK XS Owner's Manual](#)
- If your computer has automatically activated any power-saving mode (such as suspended, sleep, standby) when you make a USB or IEEE1394 connection, the computer may “freeze,” or the driver may stop working. When using a USB or IEEE1394 cable, disable any power-saving mode on the computer.
- Confirm whether or not a proper USB or IEEE1394 cable is used.
If the USB or IEEE1394 cable is broken or damaged, have the USB or IEEE1394 cable replaced with a known working one.
- Do not use a USB or IEEE1394 hub for connecting multiple USB or IEEE1394 devices.

Screen redrawing is slow or stopped.

- Does your computer satisfy the system requirements? [page 4](#)
- Is any other application or device driver running?
Quit the device driver or any unnecessary applications before operating the MOTIF-RACK XS Editor.