



# RIVAGE PM Editor Installation Guide

## SOFTWARE LICENCING AGREEMENT

PLEASE READ THIS SOFTWARE LICENSE AGREEMENT ("AGREEMENT") CAREFULLY BEFORE USING THIS SOFTWARE. YOU ARE ONLY PERMITTED TO USE THIS SOFTWARE PURSUANT TO THE TERMS AND CONDITIONS OF THIS AGREEMENT. THIS AGREEMENT IS BETWEEN YOU (AS AN INDIVIDUAL OR LEGAL ENTITY) AND YAMAHA CORPORATION ("YAMAHA").

BY DOWNLOADING, INSTALLING, COPYING, OR OTHERWISE USING THIS SOFTWARE YOU ARE AGREEING TO BE BOUND BY THE TERMS OF THIS LICENSE. IF YOU DO NOT AGREE WITH THE TERMS, DO NOT DOWNLOAD, INSTALL, COPY, OR OTHERWISE USE THIS SOFTWARE. IF YOU HAVE DOWNLOADED OR INSTALLED THE SOFTWARE AND DO NOT AGREE TO THE TERMS, PROMPTLY DELETE THE SOFTWARE.

### 1. GRANT OF LICENSE AND COPYRIGHT

Yamaha hereby grants you the right to use the software program(s) and data ("SOFTWARE") accompanying this Agreement. The term SOFTWARE shall encompass any updates to the accompanying software and data. The SOFTWARE is owned by Yamaha and/or Yamaha's licensor(s), and is protected by relevant copyright laws and all applicable treaty provisions. While you are entitled to claim ownership of the data created with the use of SOFTWARE, the SOFTWARE will continue to be protected under relevant copyrights.

- **You may** use the SOFTWARE on **your computer(s)**.
- **You may** make one or a reasonable number of copies of the SOFTWARE in machine-readable form for backup purposes only, if the SOFTWARE is on media where such backup copy is permitted. On the backup copy, you must reproduce Yamaha's copyright notice and any other proprietary legends that were on the original copy of the SOFTWARE.
- **You may** permanently transfer to a third party all your rights in the SOFTWARE, provided that you do not retain any copies and the recipient reads and agrees to the terms of this Agreement.

### 2. RESTRICTIONS

- **You may not** engage in reverse engineering, disassembly, decompilation or otherwise deriving a source code form of the SOFTWARE by any method whatsoever.
- **You may not** reproduce, modify, change, rent, lease, or distribute the SOFTWARE in whole or in part, or create derivative works of the SOFTWARE.
- **You may not** electronically transmit the SOFTWARE from one computer to another or share the SOFTWARE in a network with other computers.
- **You may not** use the SOFTWARE to distribute illegal data or data that violates public policy.
- **You may not** initiate services based on the use of the SOFTWARE without permission by Yamaha Corporation.

Copyrighted data, including but not limited to MIDI data for songs, obtained by means of the SOFTWARE, are subject to the following restrictions which you must observe.

- Data received by means of the SOFTWARE may not be used for any commercial purposes without permission of the copyright owner.
- Data received by means of the SOFTWARE may not be duplicated, transferred, or distributed, or played back or performed for listeners in public without permission of the copyright owner.
- The encryption of data received by means of the SOFTWARE may not be removed nor may the electronic watermark be modified without permission of the copyright owner.

### 3. TERMINATION

This Agreement becomes effective on the day that you receive the SOFTWARE and remains effective until terminated. If any copyright law or provisions of this Agreement is violated, the Agreement shall terminate automatically and immediately without notice from Yamaha. Upon such termination, you must immediately destroy the licensed SOFTWARE, any accompanying written documents and all copies thereof.

### 4. DISCLAIMER OF WARRANTY ON SOFTWARE

You expressly acknowledge and agree that use of the SOFTWARE is at your sole risk. The SOFTWARE and related documentation are provided "AS IS" and without warranty of any kind. NOTWITHSTANDING ANY OTHER PROVISION OF THIS AGREEMENT, YAMAHA EXPRESSLY DISCLAIMS ALL WARRANTIES AS TO THE SOFTWARE, EXPRESS, AND IMPLIED, INCLUDING BUT NOT LIMITED TO THE IMPLIED WARRANTIES OF MERCHANTABILITY, FITNESS FOR A PARTICULAR PURPOSE AND NON- INFRINGEMENT OF THIRD PARTY RIGHTS.

SPECIFICALLY, BUT WITHOUT LIMITING THE FOREGOING, YAMAHA DOES NOT WARRANT THAT THE SOFTWARE WILL MEET YOUR REQUIREMENTS, THAT THE OPERATION OF THE SOFTWARE WILL BE UNINTERRUPTED OR ERROR-FREE, OR THAT DEFECTS IN THE SOFTWARE WILL BE CORRECTED.

## 5. LIMITATION OF LIABILITY

YAMAHA'S ENTIRE OBLIGATION HEREUNDER SHALL BE TO PERMIT USE OF THE SOFTWARE UNDER THE TERMS HEREOF. IN NO EVENT SHALL YAMAHA BE LIABLE TO YOU OR ANY OTHER PERSON FOR ANY DAMAGES, INCLUDING, WITHOUT LIMITATION, ANY DIRECT, INDIRECT, INCIDENTAL OR CONSEQUENTIAL DAMAGES, EXPENSES, LOST PROFITS, LOST DATA OR OTHER DAMAGES ARISING OUT OF THE USE, MISUSE OR INABILITY TO USE THE SOFTWARE, EVEN IF YAMAHA OR AN AUTHORIZED DEALER HAS BEEN ADVISED OF THE POSSIBILITY OF SUCH DAMAGES. In no event shall Yamaha's total liability to you for all damages, losses and causes of action (whether in contract, tort or otherwise) exceed the amount paid for the SOFTWARE.

## 6. THIRD PARTY SOFTWARE

Third party software and data ("THIRD PARTY SOFTWARE") may be attached to the SOFTWARE. If, in the written materials or the electronic data accompanying the Software, Yamaha identifies any software and data as THIRD PARTY SOFTWARE, you acknowledge and agree that you must abide by the provisions of any Agreement provided with the THIRD PARTY SOFTWARE and that the party providing the THIRD PARTY SOFTWARE is responsible for any warranty or liability related to or arising from the THIRD PARTY SOFTWARE. Yamaha is not responsible in any way for the THIRD PARTY SOFTWARE or your use thereof.

- Yamaha provides no express warranties as to the THIRD PARTY SOFTWARE. IN ADDITION, YAMAHA EXPRESSLY DISCLAIMS ALL IMPLIED WARRANTIES, INCLUDING BUT NOT LIMITED TO THE IMPLIED WARRANTIES OF MERCHANTABILITY AND FITNESS FOR A PARTICULAR PURPOSE, as to the THIRD PARTY SOFTWARE.
- Yamaha shall not provide you with any service or maintenance as to the THIRD PARTY SOFTWARE.
- Yamaha is not liable to you or any other person for any damages, including, without limitation, any direct, indirect, incidental or consequential damages, expenses, lost profits, lost data or other damages arising out of the use, misuse or inability to use the THIRD PARTY SOFTWARE.

## 7. GENERAL

This Agreement shall be interpreted according to and governed by Japanese law without reference to principles of conflict of laws. Any dispute or procedure shall be heard before the Tokyo District Court in Japan. If for any reason a court of competent jurisdiction finds any portion of this Agreement to be unenforceable, the remainder of this Agreement shall continue in full force and effect.

## 8. COMPLETE AGREEMENT

This Agreement constitutes the entire agreement between the parties with respect to use of the SOFTWARE and any accompanying written materials and supersedes all prior or contemporaneous understandings or agreements, written or oral, regarding the subject matter of this Agreement. No amendment or revision of this Agreement will be binding unless in writing and signed by a fully authorized representative of Yamaha.

## Precautions

- The software and this document are the exclusive copyrights of Yamaha Corporation.
- Please read carefully the Software License Agreement found in this document before installing the software.
- Copying or modifying the software or reproduction of this document, by any means, whether in whole or in part, is expressly forbidden without the written consent of Yamaha Corporation.
- Yamaha Corporation makes no representations or warranties with regard to the use of the software and documentation and cannot be held responsible for the results of the use of the software and this document.
- Information about system software and changes to certain product functions or specification due to updates to the software is available at the Yamaha Pro Audio website.  
<https://www.yamaha.com/proaudio/>
- Illustrations of product screens that appear in this document are for instructional purposes, and may appear somewhat different from the screens that are displayed on your computer.
- Copying of commercially available music sequence data and/or digital audio files is strictly prohibited except for your personal use.
- Windows is a registered trademark of Microsoft Corporation in the United States of America and other countries.
- Mac and macOS are trademarks of Apple Inc., registered in the U.S. and other countries.
- The company names and product names in this document are the trademarks or registered trademarks of their respective companies.
- This guide predominantly uses screenshots of Windows.

## Information

- A part of this software is open source. For more information regarding the licenses for each software package, refer to the "About" screen.

## About RIVAGE PM Editor

RIVAGE PM Editor (hereinafter referred to as “PM Editor”) is a software program that allows you to preconfigure the RIVAGE PM system on your computer (offline editing) and to monitor or operate the RIVAGE PM system (online monitoring/operation).

Connecting the RIVAGE series control surface and a computer with PM Editor to the RIVAGE PM system simultaneously allows you to control the system from both units. Even if you cannot continue to control the system due to a problem with a control surface, you can still use PM Editor to control the mixing parameters in the RIVAGE PM system.

### Precautions for Use

---

- For RIVAGE PM Editor earlier than V2.0.0, only one PM Editor can be used per system. RIVAGE PM Editor V2.0.0 or later allows use of up to two per system. Do not connect computers exceeding the usable number. When you are using two PM Editors for one system, connect the computers to each NETWORK connector of the DSP engine and the console surface or connect the computers via the switching hub.
- If you synchronize PM Editor with DSP-R10/CSD-R7, any “RECALL UNDO” that was enabled until that point is reset.

## How to Start Using the Software

### Step 1 Installation and Network Configuration

---

- 1 Check whether you can use PM Editor on your computer. (Page 4)**
- 2 Install PM Editor. (Page 4)**
- 3 Configure the network. (Page 5)**

### Step 2 Connection and Activation

---

**Connect your computer to the RIVAGE PM system, and launch PM Editor. (Page 6)**

RIVAGE PM Editor has the same functions as the touchscreen of the control surface.

For information regarding operations other than the ones described above, refer to the Operation Manual of the RIVAGE PM series.

You can download the RIVAGE PM Operation Manual from the following website.

<https://www.yamaha.com/proaudio/>

# Installing the PM Editor and making the network settings

## System Requirements

<b>OS</b>	Windows 7, Windows 8.1, Windows 10 OS X 10.9.x, OS X 10.10.x, OS X 10.11.x, macOS 10.12.x, macOS 10.13.x
<b>CPU</b>	Windows: Intel 64-bit processors running at 2 GHz or faster Mac: Intel Core family processor
<b>RAM</b>	2 GB or more
<b>HDD</b>	1 GB or more
<b>Display</b>	1280 x 1024 or higher resolution, 16-bit or higher color depth
<b>Others</b>	Pointing device (mouse, etc.), Ethernet connection (1000BASE-T/100BASE-TX)

**NOTE** The Minimum System Requirements described above are applied to the PM Editor version 2.0.2. The system requirements may differ slightly depending on the particular computer. Keep in mind that the software is often updated and the system requirements are subject to change. You can check the latest version information of each program and its system requirements at the following website <https://www.yamaha.com/proaudio/>

## Installing the PM Editor

Follow the instructions below to install the PM Editor.  
No additional software is needed to run the PM Editor.

### 1 Extract the downloaded file and double-click “setup.exe” (Windows) or “Yamaha RIVAGE PM Editor Vx.x.x.pkg” (Mac).

The setup dialog of the PM Editor is displayed.

- NOTE**
- x.x.x represents the firmware version number.
  - Click [Continue] or [Yes], if the “User Account Control” window appears.

### 2 Follow the on-screen instructions and install the software.

## Network Settings

---

Make the following network settings when connecting a computer with the PM Editor installed to the RIVAGE PM system.

### TCP/IP settings of the computer

<b>IP address</b>	192.168.53.1 – 192.168.53.32
<b>Subnet mask</b>	255.255.255.0

### Making TCP/IP settings for the computer

#### ■ Windows

**1 Access the Control Panel, then click or double-click [Network and Sharing Center] or [View network status and tasks].**

The “Network and Sharing Center” window is called up.

**2 Click [Manage network connection] or [Change adapter settings] from the “Tasks” list located in the left side of “Network and Sharing Center” window, then double-click [Local Area Connection].**

(Select [Local Area Connection 2] etc., depending on your environment.)

The “Local Area Connection Status” dialog box is called up.

If the “Local Area Connection properties” dialog box appears instead, skip ahead to step 4.

**3 Click [Properties].**

The “Local Area Connection properties” dialog box is called up.

**4 Select [Internet Protocol Version 4 (TCP/IPv4)], then click [Properties].**

The “Internet Protocol Version 4 (TCP/IPv4) Protocol” dialog box is called up.

**5 Click [Use the following IP address].**

**6 Enter your computer’s IP address into [IP address] and the Subnet mask into [Subnet mask].**

**7 Click [OK].**

**NOTE** The “User Account Control” dialog box may appear during the procedure. If so, click [Continue].

#### ■ Mac

**1 Click [System Preferences], then click [Network].**

The “Network” dialog box will be displayed.

**2 Click the service that you want to connect to the device.**

If you’re using the Ethernet port that’s built into the Mac, click [Ethernet].

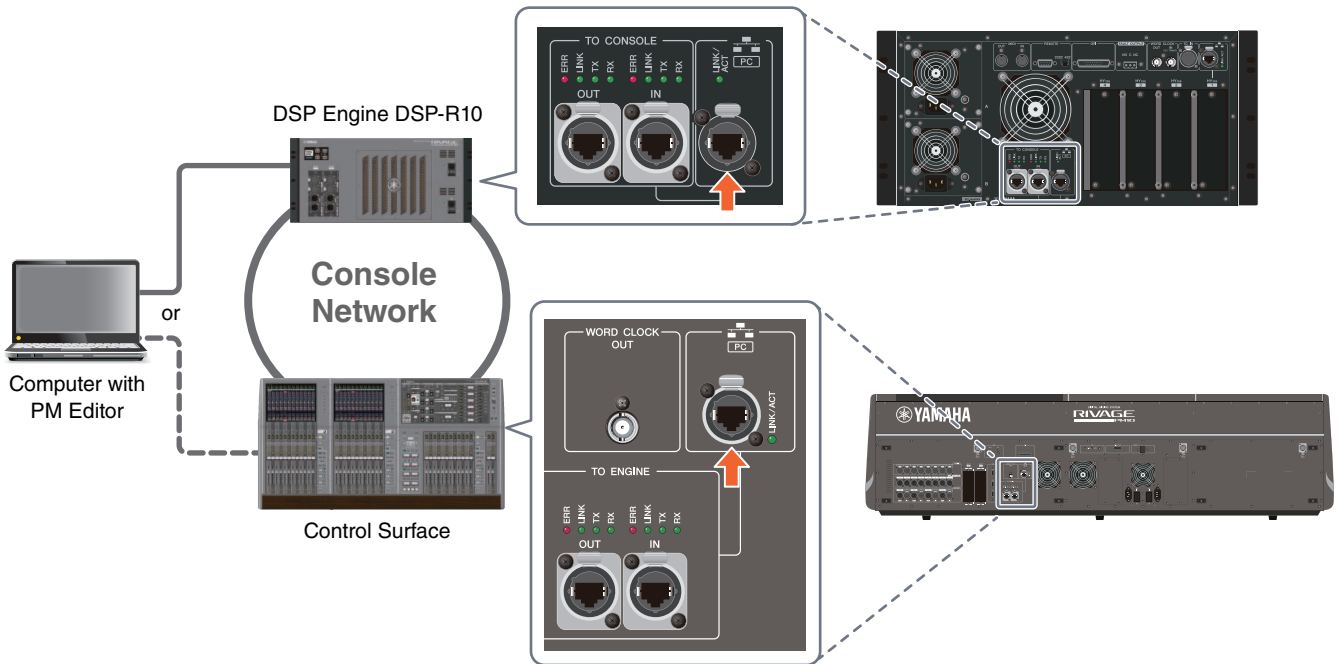
**3 In “Configure IPv4,” choose [Manually].**

**4 Enter your computer’s IP address into [IP address] and the Subnet mask into [Subnet Mask].**

**5 Click [Apply] button, then close “Network” dialog box.**

# Connection and Activation

## 1 Use an Ethernet cable to connect the computer with PM Editor to the RIVAGE PM system.



Connect the computer where PM Editor is installed to the DSP engine. To establish a connection with the DSP engine, connect the cable to the NETWORK terminal (PC) located next to the TO CONSOLE terminal. Never connect the cable to the NETWORK terminal above the HY card slots. Alternatively, you can connect the cable to the NETWORK terminal on the control surface. Note that in the RIVAGE PM10 system, connection with the DSP engine will be cut off and the communication cannot be established if you turn off the power to the control surface.

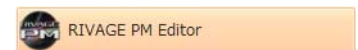
- NOTE**
- For RIVAGE PM Editor earlier than V2.0.0, only one PM Editor can be used per system. RIVAGE PM Editor V2.0.0 or later allows use of up to two per system. Do not connect computers exceeding the usable number.
  - When you are using two PM Editors for one system, connect the computers to each NETWORK connector of the DSP engine and the console surface or connect the computers via the switching hub.

## 2 Activate PM Editor.

In Windows 7: "Start" → "All Programs" → "RIVAGE PM Editor"

In Windows 8.1/Windows 10: Click the "RIVAGE PM Editor" tile on the "Start" screen

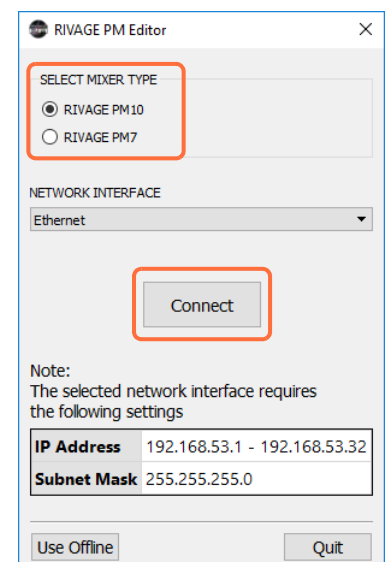
In Mac: Open the "Applications," and then double-click "RIVAGE PM Editor"



**NOTE** If the "User Account Control" dialog box appears, click [Yes].

After you activate the software, a popup window for establishing a connection appears.

Select "MIXER TYPE," and then click the [Connect] button to start PM Editor.



## Uninstalling the Software (Deleting the Application)

### ■ Windows

Use the “Control Panel” to uninstall RIVAGE PM Editor.

Go to “Control Panel” → “Programs and Features” or “Uninstall a program,” select the items you wish to delete, and click [Uninstall]. Next, a dialog box appears. Follow the instructions on the screen to delete the application.

If the “User Account Control” window appears, click [Continue] or [Yes].

### ■ Mac

Double-click “Uninstall RIVAGE PM Editor.app” which is included in the installer.

Follow the instructions on the screen to delete the application.

## Troubleshooting

### Cannot synchronize the PM Editor with the RIVAGE PM system.

#### ● Is the network cable properly connected?

Use an Ethernet cable to connect the computer directly to the RIVAGE PM system. Confirm that the cable is connected to the correct terminal. Connect either to the control surface or to DSP-R10. (Do not connect to both of them.) ..... [Page 6](#)

#### ● Is there any resident security software installed?

If the firewall function of anti-virus or security software is enabled, the communication may not be established properly.

#### ● Are the network settings configured correctly?

Check your computer settings ..... [Page 5](#)

#### ● Is the selected MIXER TYPE correct?

Select the correct MIXER TYPE, then click the [Connect] button again..... [Page 6](#)

Yamaha Pro Audio global website  
<https://www.yamaha.com/proaudio/>

Yamaha Downloads  
<http://download.yamaha.com/>