



# DZR Firmware Updater

## User's Guide

### Introduction

Thank you for choosing this Yamaha product.

This User's Guide explains how to use the "DZR Firmware Updater" application to update the firmware of the DZR series and DXS-XLF series (only Dante-supported models).

### Precautions (Read First)

- Performing updates is at the user's own risk.
- Note that the device may be damaged if it is not operated according to the procedures described in this User's Guide, such as turning off the device or disconnecting the cable while the update is in progress (loading data).
- If the update fails or the device does not operate correctly even after the update has been attempted again, try the Firmware Recovery procedure indicated in the Supplemental Information section. If the device still fails to operate properly, contact qualified Yamaha service personnel.
- Yamaha Corporation owns all copyrights for the device firmware, its update program and the User's Guide.
- Unauthorized duplication or modification of part or all of the firmware, software, and User's Guide is prohibited.
- The screen shots in this User's Guide are for instructional purposes only and may differ from the actual screens.
- Dante is a registered trademark of Audinate Pty. Ltd.
- Windows is a registered trademark of Microsoft Corporation in the United States and other countries.
- All other company and product names mentioned in this document are the trademarks or registered trademarks of their respective companies.

## Step 1. Preparing the hardware and software

1. Prepare the following hardware.

Hardware	Notes
Dante-supported speakers	<ul style="list-style-type: none"> <li>• DZR series : DZR315-D(W), DZR15-D(W), DZR12-D(W), DZR10-D(W)</li> <li>• DXS series : DXS18XLF-D(W), DXS15XLF-D(W)</li> </ul>
Windows computer	<ul style="list-style-type: none"> <li>• OS : Windows 10 (32-bit/64-bit), Windows 11</li> <li>• CPU : 1 GHz or faster processor</li> <li>• Memory : 2 GB or more</li> <li>• Others : Ethernet (1000BASE-T) is required.</li> </ul>
Ethernet cable	<ul style="list-style-type: none"> <li>• CAT5e or higher recommended.</li> <li>• Either a straight-through or crossover cable can be used.</li> </ul>

2. Set up the following software on the prepared computer.

Software	Setup procedure
Application "DZR Firmware Updater"	<ol style="list-style-type: none"> <li>1. Download "dzt_firmware_updater.zip" from the Yamaha Pro Audio website, and then extract it.</li> <li>2. Save "DZR_Firmware_Updater" to a folder.</li> </ol>
Firmware file "DZR_PROG.BIN"	<ol style="list-style-type: none"> <li>1. Download "dzt_firm ***.zip" (where "***" is the version number) from the Yamaha Pro Audio website, and then extract it.</li> <li>2. Save "DZR_PROG.BIN" to a folder.</li> </ol>

### Note

- URL of Yamaha Pro Audio website : <https://www.yamahaproaudio.com/>
- Note that the name of the firmware file after extraction does not include the version number.

## Step 2. Specifying computer TCP/IP setting

1. On the computer, open the "Internet Protocol Version 4 (TCP/IPv4) Properties" dialog box.

### Note

This dialog box can be opened, for example, by clicking the following in the order shown.

[Control Panel]

→ [Network and Internet]

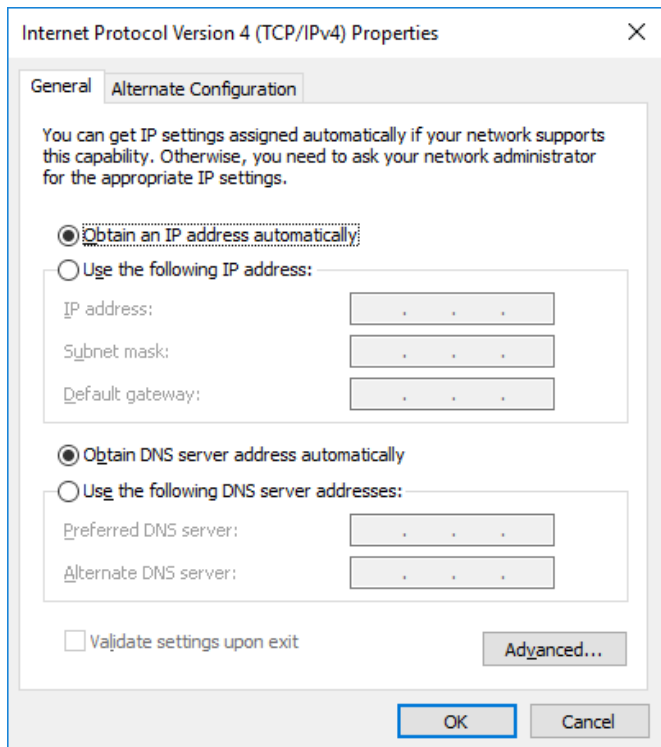
→ [Network and Sharing Center]

→ [Ethernet/Wi-Fi]

→ [Properties]

→ [Internet Protocol Version 4 (TCP/IPv4)]

→ [OK]



From here, the procedure differs depending on the speaker setting.

### 【 When speaker IP address setting is DHCP 】

2. Select [Obtain an IP address automatically], and then click [OK].

### 【 When speaker IP address setting is Unit ID 】

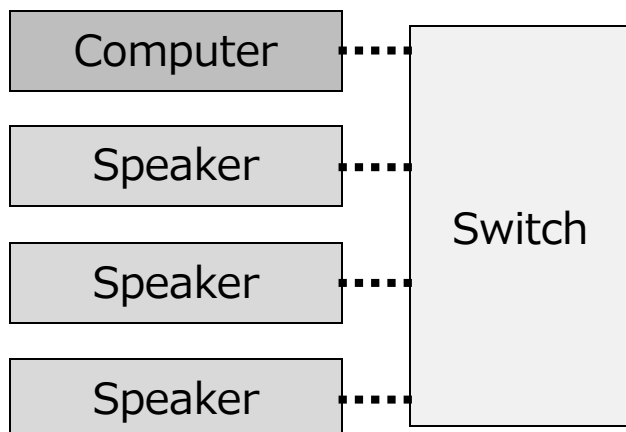
2. Select [Use the following IP address].
3. In the [IP address] box, enter [192.168.0.\*\*\*]  
(where "\*\*\*" is not the same value as for the DZR and unit ID).
4. In the [Subnet mask] box, enter [255.255.255.0], and then click [OK].

### Note

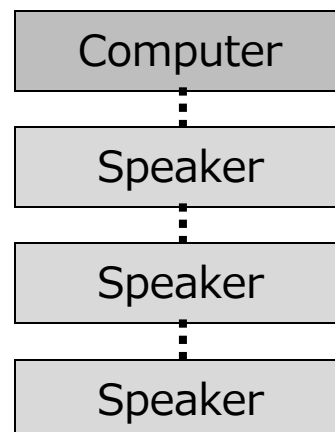
- The default speaker IP address setting is DHCP.
- When specifying settings, the "DZR Firmware Updater" may be blocked by Windows Firewall. Click [Windows Security] → [Firewall & network protection] → [Allow an app through firewall] → [Change settings], select the [Private] check box beside "DZR Firmware Updater", and then click [OK].

## Step 3. Updating the speaker firmware

1. Use Ethernet cables to connect the speakers and computer (via a switch in a star connection).



【 Connection example 1 :  
Star connection 】



【 Connection example 2 :  
Daisy-chain connection 】

### Note

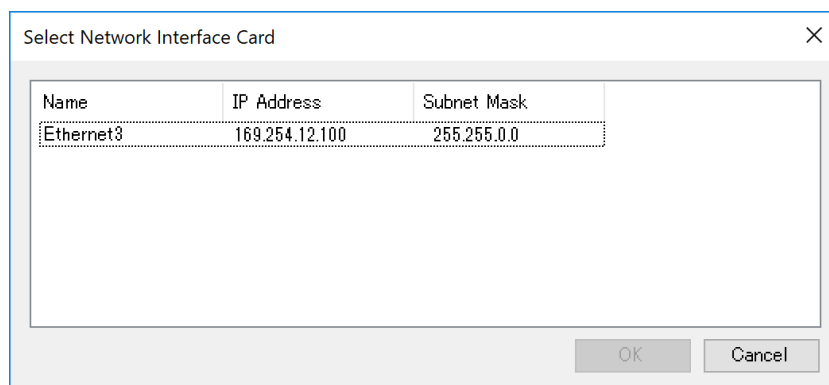
If the computer enters standby, for example, in Power saver mode, data transfer to the device may stop.

Set the computer in advance so that it does not enter standby. In addition, do not use a screen saver, etc.

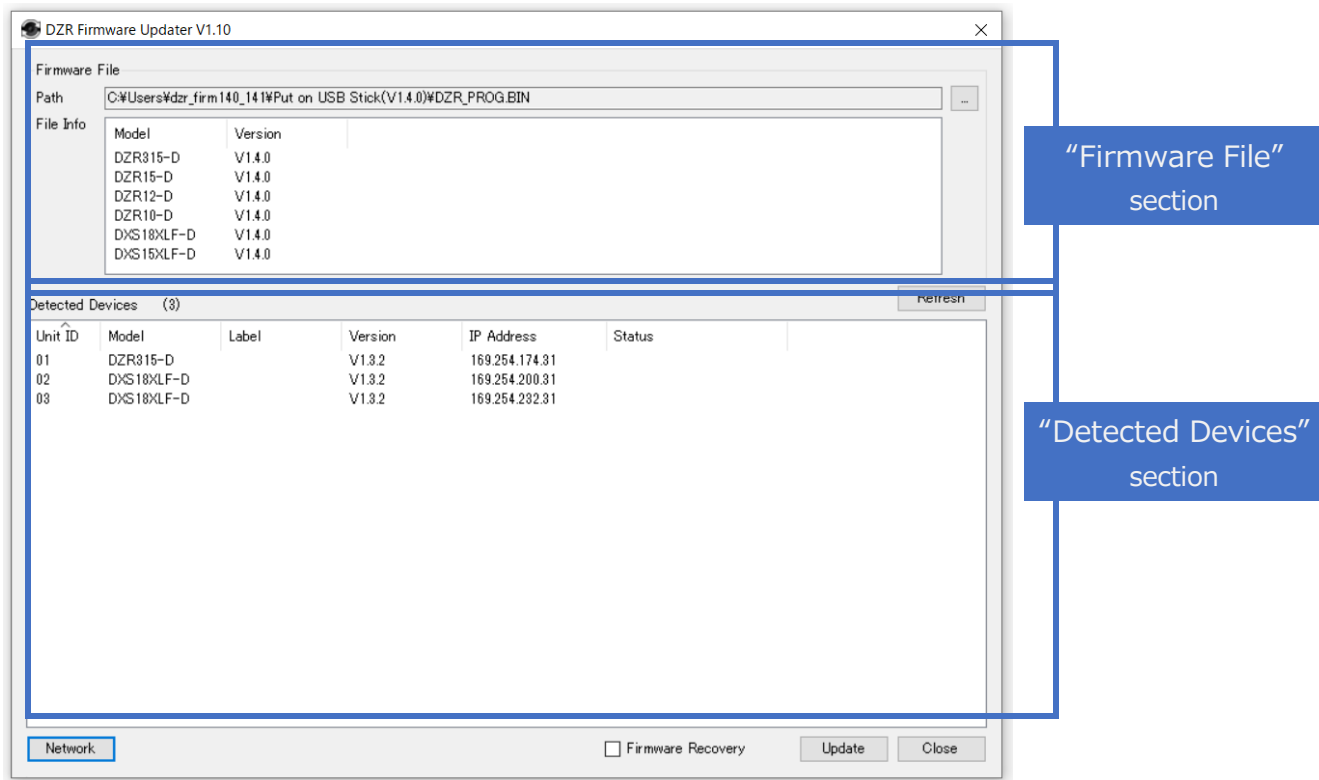
From here, the descriptions show screen shots that appear as **【 When speaker IP address setting is DHCP 】**.

2. Start "DZR Firmware Updater".

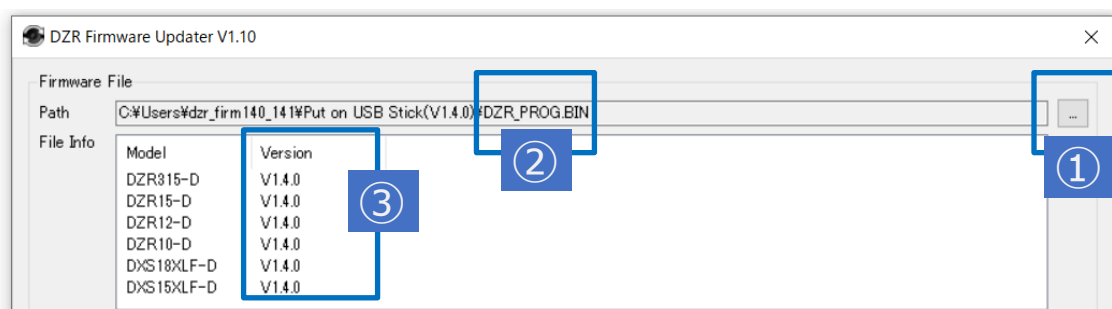
→ "Select Network Interface Card" dialog box appears, and the usable network cards are listed.



3. Select the network card whose TCP/IP setting was specified, and then click [OK].  
→ The main window appears.

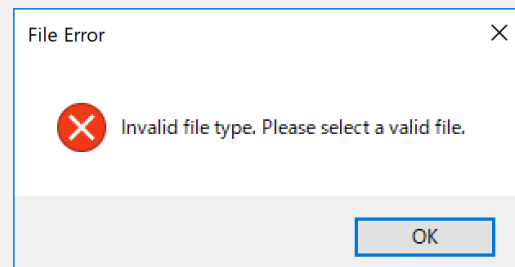


4. Click the select file button (① in the screen shot) in the "Firmware File" section, and then select [DZR\_PROG.BIN].  
→ The name of the selected firmware file appears at ② and the version at ③ in the screen shot.



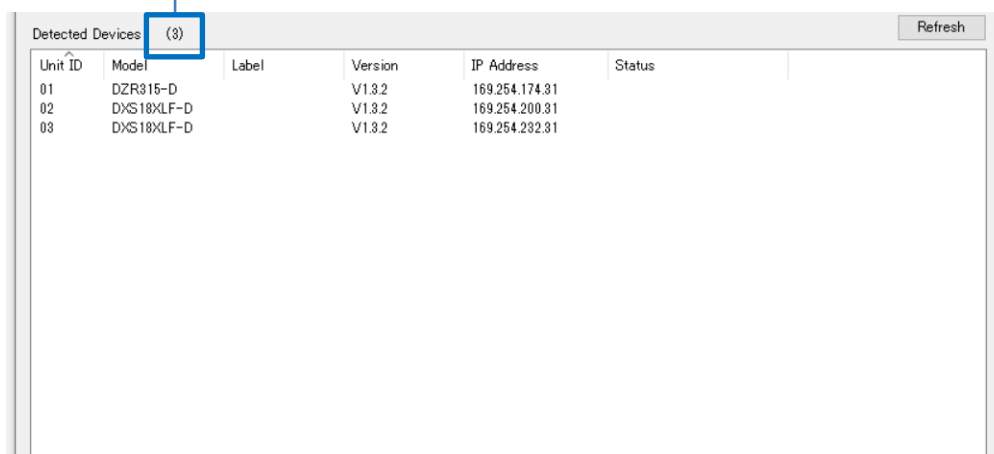
### Note

If the correct firmware file has not been selected, an error message appears.



5. Check the number of speakers and the corresponding information displayed in the "Detected Devices" section.

Number of speakers discovered



Unit ID	Model	Label	Version	IP Address	Status
01	DZR315-D		V1.3.2	169.254.174.31	
02	DXS18XLF-D		V1.3.2	169.254.200.31	
03	DXS18XLF-D		V1.3.2	169.254.232.31	

Menu	Description
Unit ID	The unit ID of the speaker.
Model	The model name of the speaker.
Label	The designation of the speaker.
Version	The firmware version of the speaker.
IP Address	The IP address of the speaker.
Status	The progress of the update.

**Note**

- When [Refresh] is clicked, the displayed information is cleared, and then the speakers are detected again. (If network settings have not been enabled, [Refresh] cannot be clicked.)
- If no speaker information is displayed, even though the TCP/IP setting is correctly specified, restart the speakers.

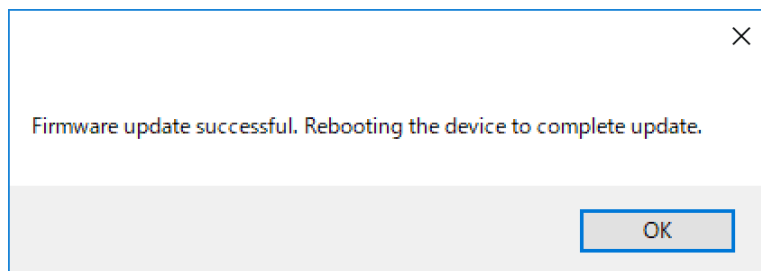
6. Click [Update].

→ The speakers are updated.

**Note**

- Under "Status", "Updating..." appears when the update is in progress, and "Completed" appears when updating is finished.
- If the speaker firmware version is the same as the firmware file version, "Skip" appears under "Status" and the update is skipped.
- If "Error (Command)" or "Error (Status)" appears under "Status", the update has not been completed successfully. Check the connection status, and then perform the update again.

→ When the update is finished, completion information appears.



→ When the update is finished, the speakers will automatically restart.

After the restart, you can check the updated firmware version in the "Detected Devices" section.

This completes the firmware update.

## Supplemental Information

### Firmware Recovery Using the Firmware Recovery Function

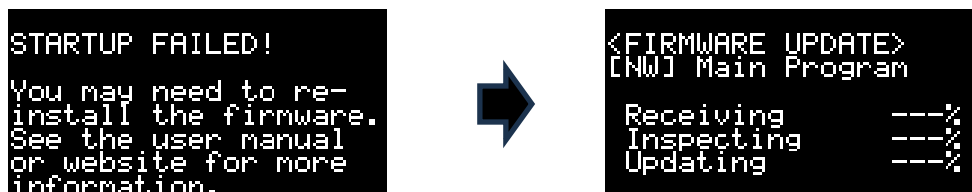
If an error occurs while updating DZR and DXS series firmware, in rare cases the update data can become corrupted and prevent using the device.

However, the DZR Firmware Updater includes a Firmware Recovery mode for recovering the firmware from that state. If the firmware update fails and the firmware does not start up properly, the Firmware Recovery mode can be used to restore speaker operability as described below.

#### 1. Confirm the device to be restored

If an error occurs during an update and then a speaker is not shown as detected in the "Detected Devices" block when later attempting to restart the speaker, it may be possible to recover the firmware for that speaker.

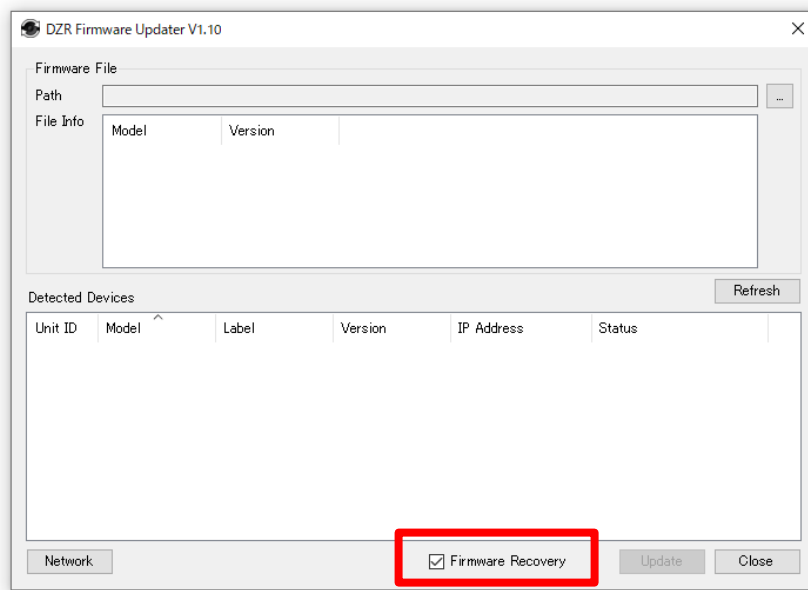
Whether or not recovery is possible can be determined on the main display panel. If the following screen appears when the speaker is restarted and the power switches ON, then firmware recovery is possible for that speaker.



\* This screen is displayed for about 3 seconds.

#### 2. Recovery Procedure

- 2.1 After restarted, the IP address of applicable DZR units is reset to 192.168.0.2.  
Therefore, set the computer IP address to a value in the form "192.168.0.x" (such as 192.168.0.253) and the subnet mask setting to "255.255.255.0," making sure the settings do not conflict with other devices on the same network.
- 2.2 Select the [Firmware Recovery] checkbox.



2.3 Click [Refresh] to detect speakers.

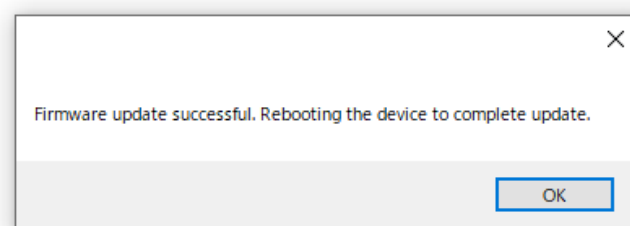
2.4 When speakers are detected, a device with unknown Unit ID and Model name will be shown detected with IP address "192.168.0.2" in the "Detected Devices" section.

**\* Even if recovery is possible for multiple devices, only 1 speaker can be detected at a time.**

Unit ID	Model	Label	Version	IP Address	Status
---	---	---	---	192.168.0.2	

2.5 Click [Update] to execute firmware recovery for that speaker.

2.6 When the update is finished, a corresponding completion message is displayed. Then the restored speaker is automatically restarted. That completes the recovery process.



2.7 To repeat the recovery process for other speakers, return to step 2.3.

- 2.8 Clear the [Firmware Recovery] checkbox and reset the computer TCP/IP settings to their previous settings.

Yamaha Pro Audio website

<https://www.yamahaproaudio.com/>

Yamaha downloads

<https://download.yamaha.com/>

© 2019 Yamaha Corporation

Published 09/2024

YJ-B0