

# Dante Firmware Update Guide

---

## Notice

---

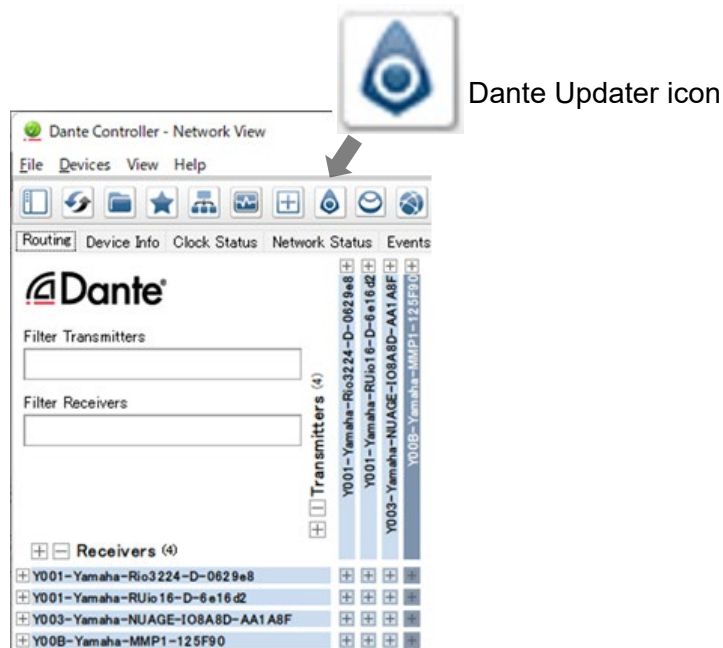
- This guide is based on Dante Updater 2.2.1 (Dante Controller v4.6.0.8). The illustrations of the guide may differ depending on the version.
- The user assumes full responsibility for the update.
- Update the firmware components one device at a time.
- Please note that the device may be damaged if you fail to follow these instructions properly, or if you turn off the device or disconnect the cable while the update is in progress.
- If the update fails, and the device still does not operate correctly even after you execute the update once again, please contact your Yamaha dealer.
- Yamaha Corporation owns exclusive copyrights for the Yamaha firmware and this guide.
- Audinate owns exclusive copyrights for the Dante firmware and its update program.
- It is prohibited to duplicate or modify the firmware, software or guides, in part or in their entirety, without permission from the copyright owner.
- The screen shots as shown in this guide are for instructional purposes only.
- Audinate®, the Audinate logo and Dante® are registered trademarks of Audinate Pty Ltd.
- The company names and product names in this document are the trademarks or registered trademarks of their respective companies.
- Software may be revised and updated without prior notice.

Depending on the device you are using, you may need to perform the operations described in the [Appendix](#) section, summarized at the end of this document. Make sure to check it before updating.

## Installing and Launching Dante Updater

Dante Updater is included in the Dante Controller software.

If you have used Dante Controller before, launch the software and check if it has the Dante Updater icon as shown below.



If the Dante Updater icon is not shown on Dante Controller, update the software to the latest version, available from the Audinate website below.

<https://my.audinate.com/support/downloads/dante-controller>

# Updating the Firmware

## Downloading a firmware file

When updating a device, download the appropriate firmware file from the Yamaha website.

In this example, search for and download the MMP1 firmware file.

<https://usa.yamaha.com/support/updates/index.html>

## Firmware / Software Updates

The screenshot shows the Yamaha Firmware / Software Updates page. It features a search bar with a dropdown menu set to 'Professional Audio' (annotated with a red circle 1), a search input field containing 'MMP1' (annotated with a red circle 2), and a 'Search' button (annotated with a red circle 3). Below the search bar is a filter dropdown set to 'All'. A table of search results is displayed (annotated with a red circle 4), with the first row 'MMP1 Firmware V1.10-2' highlighted by a red box. The table lists three items: 'MMP1 Firmware V1.10-2', 'MMP1 Firmware V1.10 (Previous version)', and 'MMP1 Firmware V1.02-2 (Previous version)', each with a download icon.

- **Note:** Please note that the search result may include all the related software and older firmware versions.

## License Agreement and Download File

### ATTENTION

PLEASE READ THIS SOFTWARE LICENSE AGREEMENT ("AGREEMENT") CAREFULLY BEFORE USING THIS SOFTWARE. YOU ARE ONLY PERMITTED TO USE THIS SOFTWARE PURSUANT TO THE TERMS AND CONDITIONS OF THIS AGREEMENT. THIS AGREEMENT IS BETWEEN YOU (AS AN INDIVIDUAL OR LEGAL ENTITY) AND YAMAHA CORPORATION ("YAMAHA").

BY DOWNLOADING OR INSTALLING THIS SOFTWARE, YOU AGREE TO ACCEPT THE TERMS OF THIS LICENSE. IF YOU DO NOT AGREE, DO NOT DOWNLOAD OR INSTALL THE SOFTWARE AND DO NOT USE THE SOFTWARE.

### GRANT OF LICENSE AND COPYRIGHT

Yamaha hereby grants you the right to use the programs and data files composing the software accompanying this Agreement, and any programs and files for upgrading such

5 Check to accept the license agreement.

☒ Yes, I agree

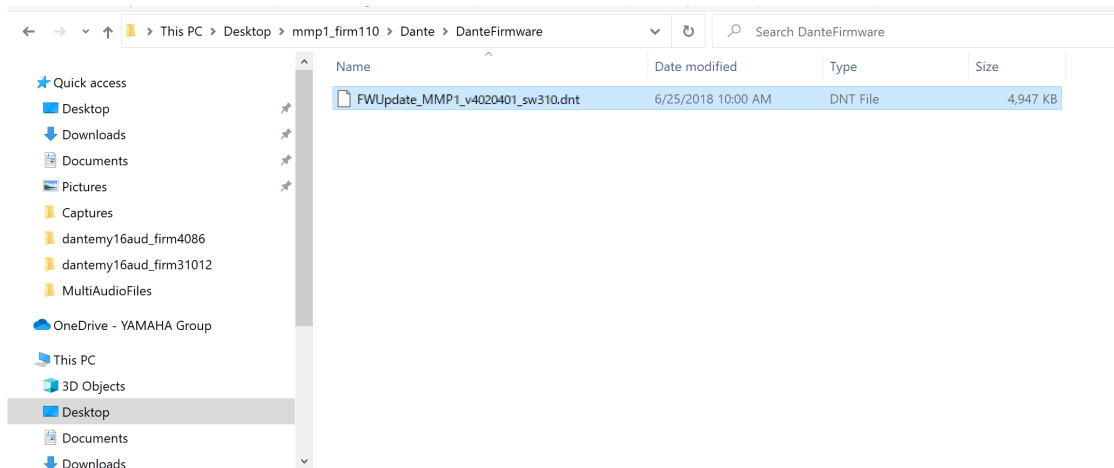
[mmp1\\_firm110-2.zip \(110.1MB\)](#)

6 Click here to download the file.

## Extracting the firmware file

---

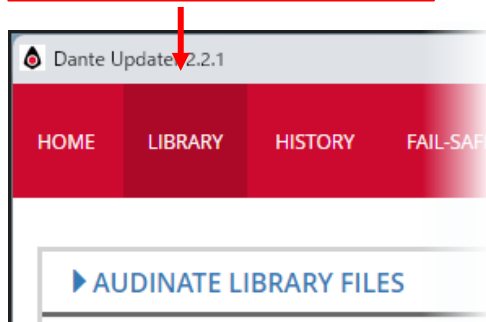
The downloaded firmware file is compressed (zipped). You will need to extract the file and store it in a directory where you can easily access it. The firmware file is in the “DanteFirmware” folder.



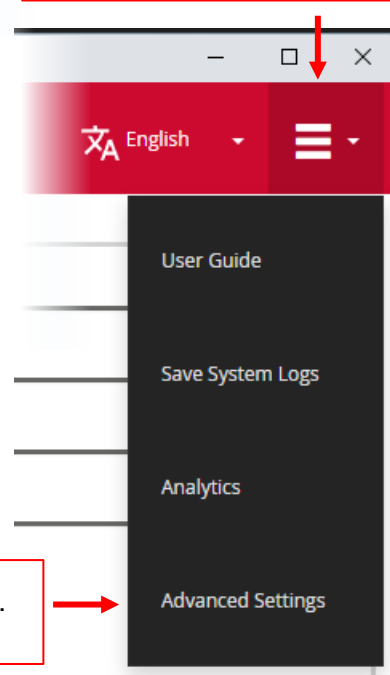
## Allowing import of the firmware

Launch Dante Updater and follow the steps below to set up Dante Updater to allow importing of the downloaded firmware file to Dante Updater and uploading of firmware files to the device.

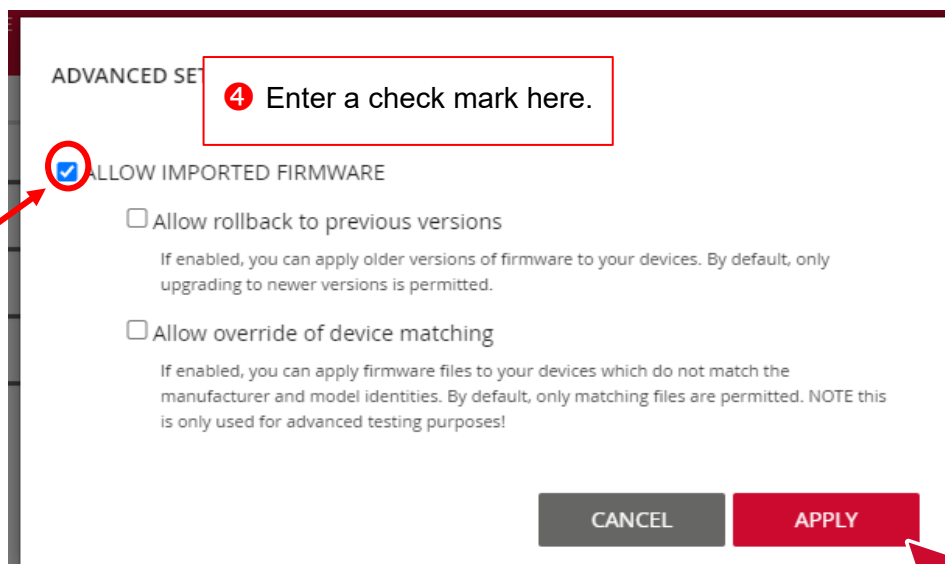
① Click the LIBRARY button.



② Click to open the menu.



③ Click the Advanced Settings menu.



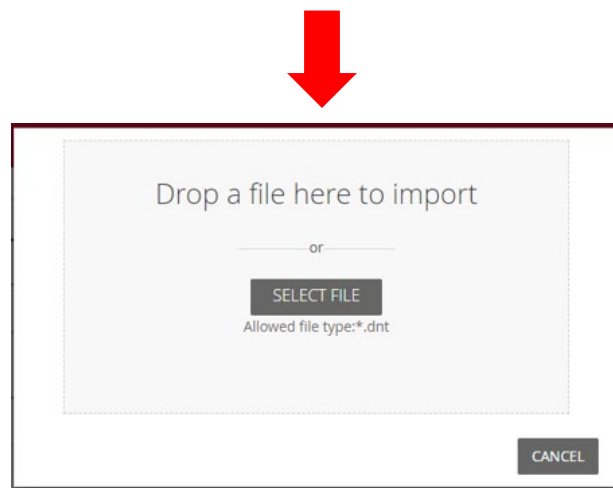
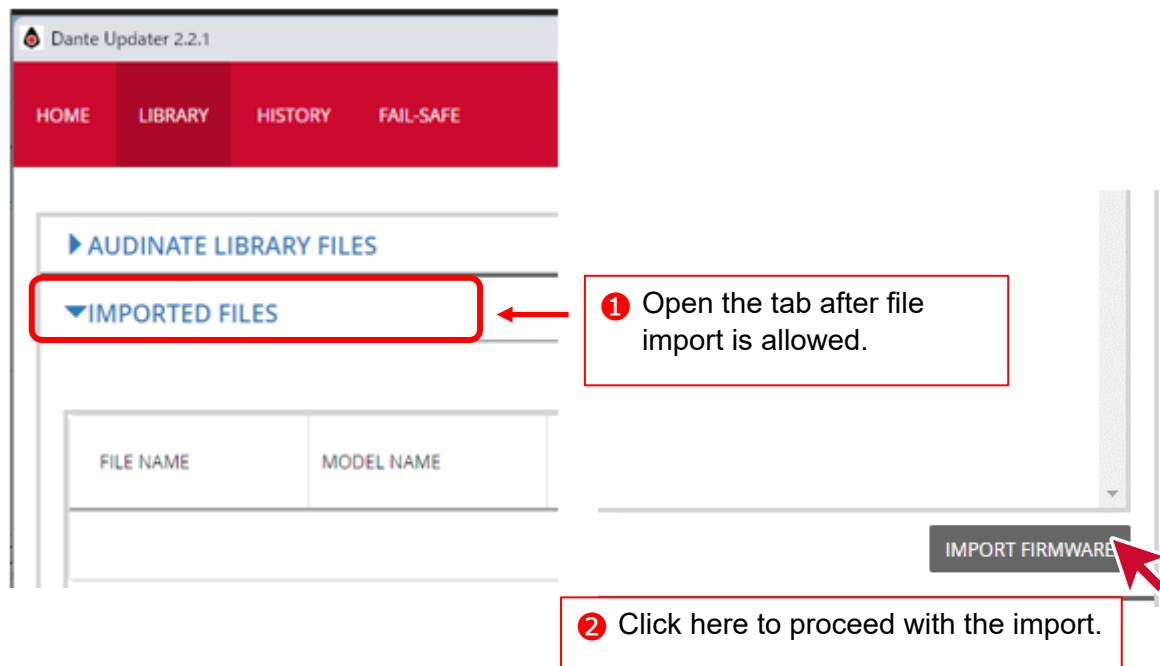
④ Enter a check mark here.

⑤ Click here to apply.

## Importing the firmware file

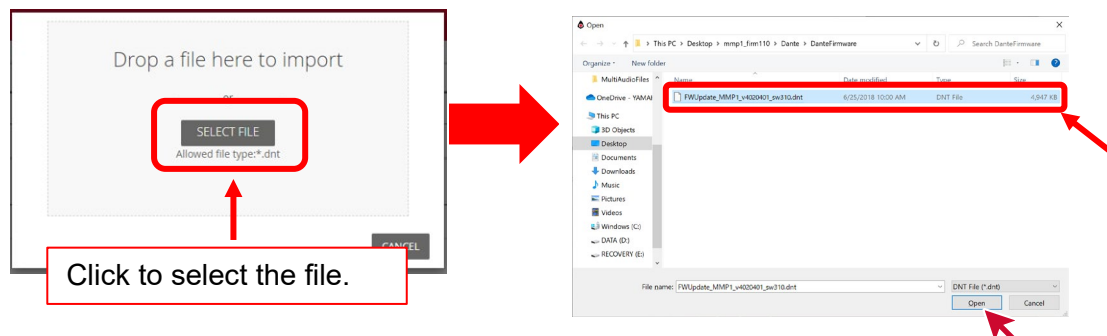
When files are ready to be imported, the IMPORTED FILES tab appears as shown below. Click the tab to open the list, and then open the popup window to import.

Your computer must be connected to the Internet when importing firmware files.

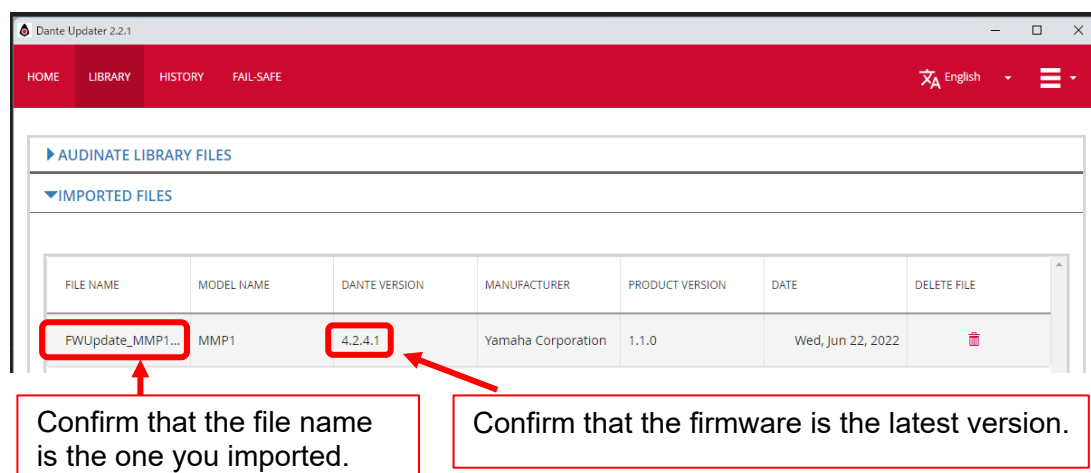


There are two methods for importing the firmware file: either **dragging and dropping the file** or **clicking the SELECT FILE button** to select the file. In this example, we will import the following file by clicking the “SELECT FILE” button.

“FWUpdate\_MMP1\_v4020401\_sw310.dnt”



When the firmware file is imported successfully, it will appear in the IMPORTED FILES tab.



## Updating the device

Go back to the “HOME” menu, and expand the firmware item shown in the IMPORTED FIRMWARE FILES list.

1 Click the HOME menu tab.

2 Click the tab to expand the list.

3 Click the appropriate tab.

4 Click here to proceed with the update.

Confirm that the firmware is the latest version.

A notice appears before the update. Enter a check mark and start the update.

5 Enter a check mark here.

6 Click here to start the update.

Wait until the update is complete.

UPDATING IN PROGRESS		
DEVICE	IP ADDRESS	UPDATE STATUS
Y00B-Yamaha-MMP1-125F90	169.254.28.113	<div style="width: 50%; background-color: green;"></div>

- **Notice:** Do not turn off the computer or the Dante device until the update is complete.



## Completing the update

Restart the device after the file is uploaded.

UPDATING COMPLETED

DEVICE	IP ADDRESS	UPDATE STATUS
Y00B-Yamaha-MMP1-125F90	169.254.28.113	<input checked="" type="checkbox"/> REBOOT REQUIRED

**1** Enter a check mark here.

**2** Click here to restart the device.

SELECT ALL REBOOT SELECTED DEVICES

Update completes after the device is restarted.

DEVICE	IP ADDRESS	UPDATE STATUS
Y00B-Yamaha-MMP1-125F90	169.254.28.113	✓ Successful

## Confirming the firmware version after the update

After restarting the device, make sure that the device is up to date.

Dante Updater 2.2.1

HOME LIBRARY HISTORY FAIL-SAFE English

UPDATE(S) AVAILABLE

IMPORTED FIRMWARE FILES

Click here to expand the tab after the update is complete.

DEVICE NAME	MANUFACTURER	MODEL NAME	PRODUCT VERSION	DANTE VERSION
Y00B-Yamaha-MMP1-125F90	Yamaha Corpora...	MMP1	1.10	4.2.4.1

Confirm that the firmware is the latest version.

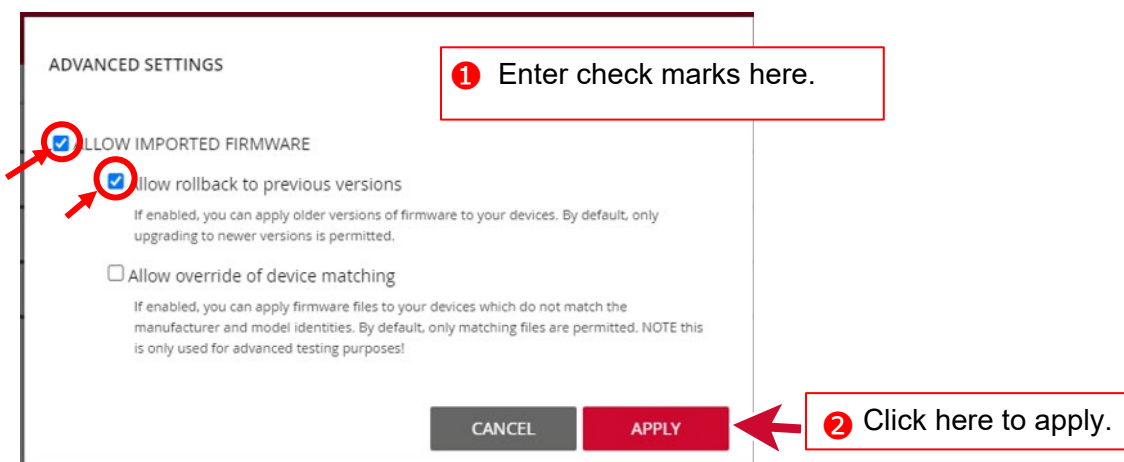
## Downgrading the Firmware Version

### Downloading and importing the firmware file

---

If you need to downgrade a device to a previous firmware, download the appropriate firmware file and set up Dante Updater as below.

1. See "[Downloading a firmware file](#)" and "[Extracting the firmware file](#)" for instructions on downloading a firmware file. Also, refer to "[Allowing import of the firmware](#)," and then enter a check on the item shown in the figure below.



- **Notice:** Make sure **NOT** to enter a check on the item below.

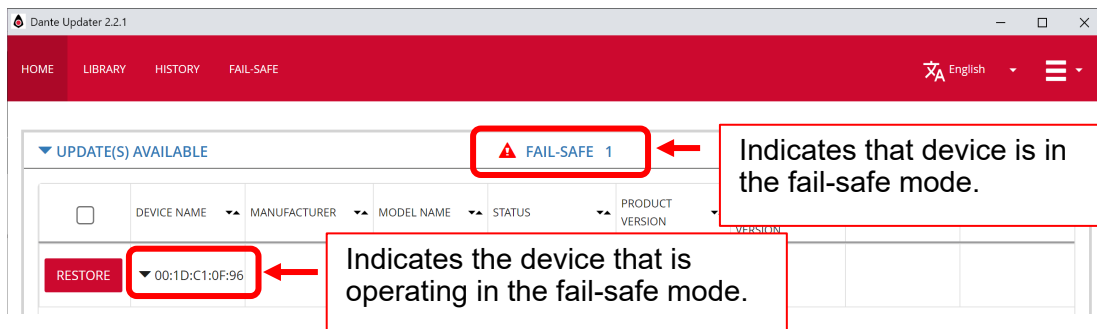
☐ Allow override of device matching

2. For instructions on importing the downloaded firmware file, refer to "[Importing the firmware file](#)."
3. Since the downgrade procedure is the same as for updating, refer to "[Updating the device](#)" to "[Confirming the firmware version after the update](#)."

## Fail-Safe Mode

### What is the fail-safe mode?

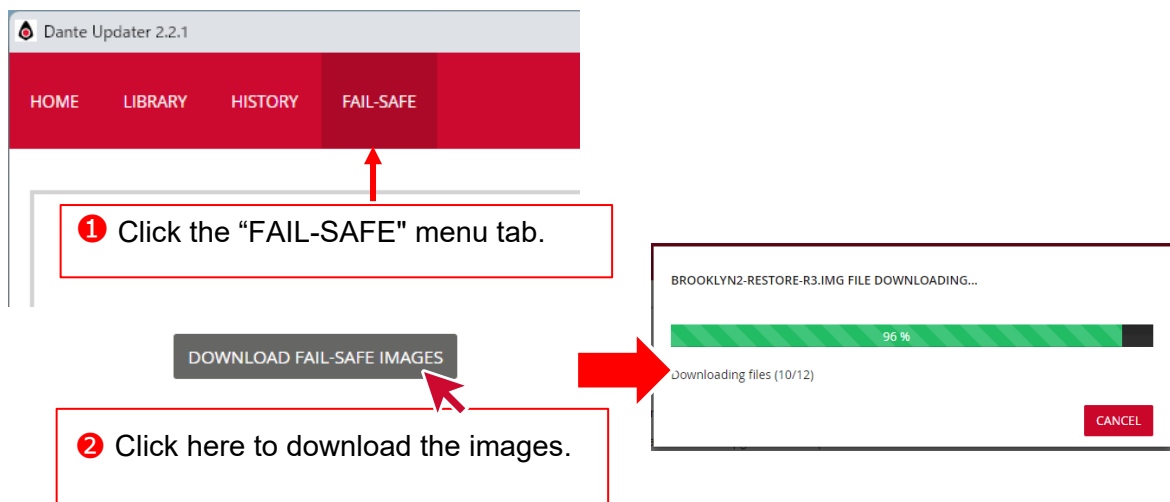
Fail-safe mode is a protection function that safely controls and restores the Dante devices in the event of a failure caused by an incorrect operation or malfunctioning behavior of the devices.



### Preparation for restoring the device

Download the image files for restoring the firmware. Wait until the files are fully downloaded.

Internet connection is required.

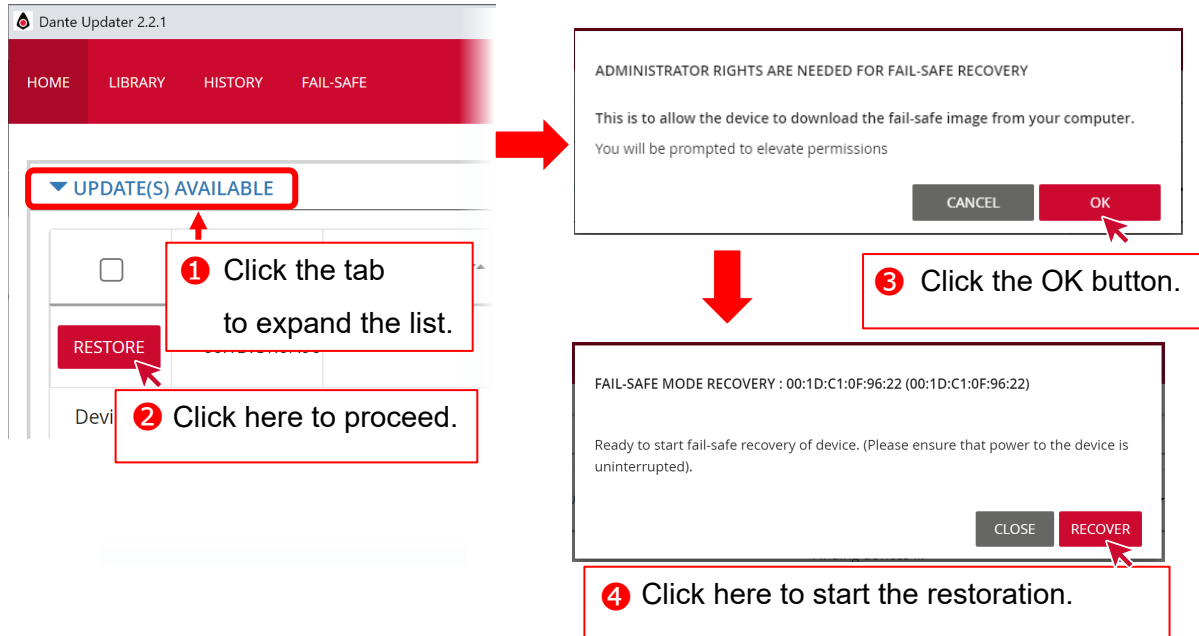


When the download is complete, the 2 button changes to the following.

✔ Fail-safe images are up-to-date

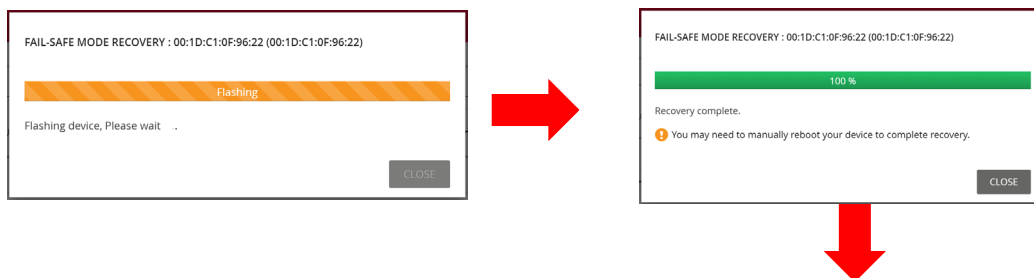
## Executing the restoration

Go back to the “HOME” menu, follow the procedure below to restore the device that can be found in the UPDATE(S) AVAILABLE list.



## Completing the restoration

Wait until the image files are uploaded.



After the restoration is complete, the device information appears.

CONSULT MANUFACTURER				
DEVICE NAME	MANUFACTURER	MODEL NAME	PRODUCT VERSION	DANTE VERSION
Y003-Yamaha-MMP1-0F9622	Yamaha Corpora...	MMP1	1.10	4.0.9.1

After recovery, the device will be listed under either “UPDATE(S) AVAILABLE” or “CONSULT MANUFACTURER.”

## Appendix

This summarizes the specific operations and instructions required depending on the device you are using. Please check if the name of your device is listed here.

### HY144-D-SRC

---

When “[extracting the firmware file](#),” there are five types of firmware for “HY144-D-SRC.” Refer to table 1 below for differences among them, and then import the target file.

Table 1

Mode	SRC	Input CH	Output CH
144io	No	144	144
144io Sync SRC	Yes (Sync)	144	144
72io Async SRC	Yes (Async)	72	72
144i Async SRC	Yes (Async)	144	0
144o Async SRC	Yes (Async)	0	144

If you intend to switch modes frequently, repeat the procedure of “[Importing the firmware file](#)” to import all necessary firmware files for your future convenience.